

Met. Dist. Comm.

70

547.96 LI

COMMONWEALTH OF MASSACHUSETTS

BK. 7093-198 (8/22/80)

46.50 ACRES

(SEE P. BK. 456 P. 67)

Met. Dist. Comm.

71A

480

gate #13

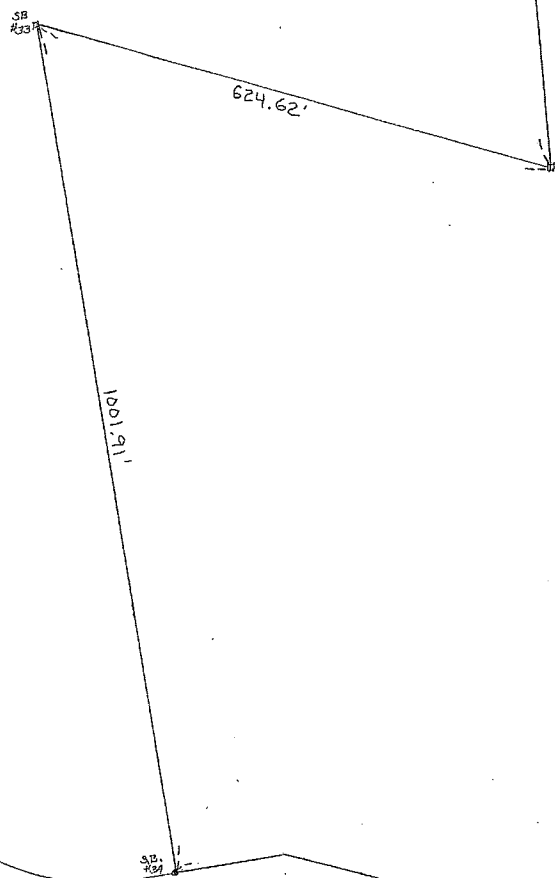
GREENWICH

2880'±

NEW ENGLAND FORESTRY FOUNDATION, INC.

BK. 52495-109 (6/30/14)

85.78 ACRES

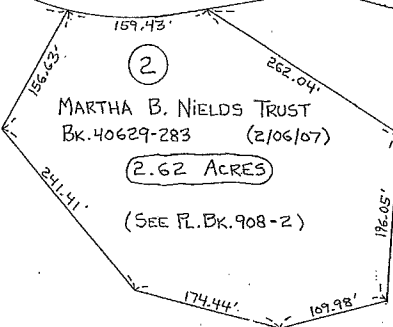


COMMONWEALTH OF MASSACHUSETTS

BK. 7093-198 (8/22/80)

205.04 ACRES

20



2

MARTHA B. NIELDS TRUST  
BK. 40629-283 (2/06/07)

2.62 ACRES

(SEE P. BK. 908-2)

NEW ENGLAND FORESTRY FOUNDATION, INC.

BK. 52495-109 (6/30/14)

85.78 ACRES

1

ROAD

2240'

± 5922'

MELLON

RD

2355'

73

71