

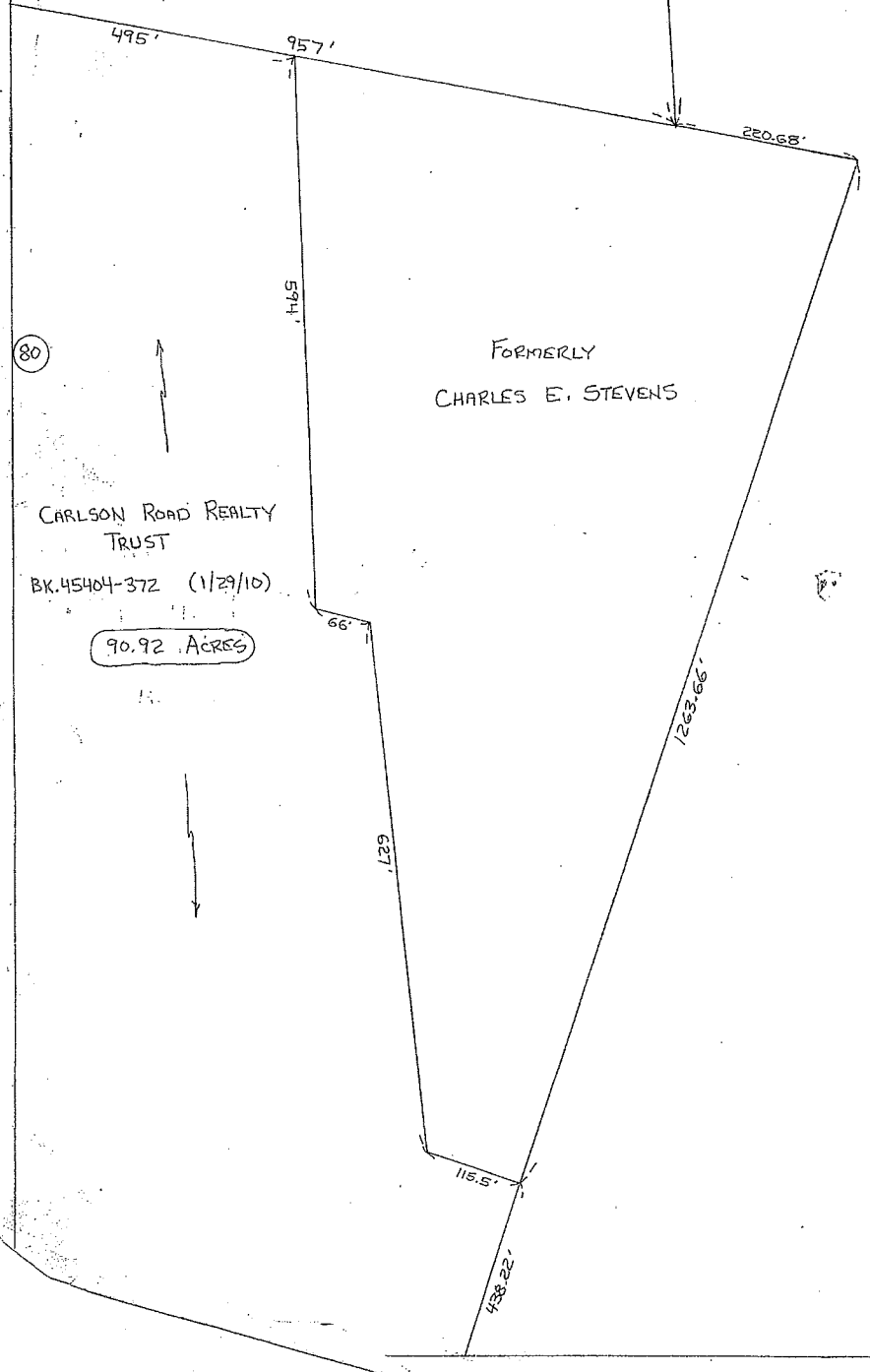
79

3

COMMONWEALTH OF MASSACHUSETTS
(DIVISION OF FISHERIES & WILDLIFE)
BK. 17119-123 (5/25/95)

- TRACT II -
15.1 ± ACRES

993.08'
970.2'



FORMERLY
CHARLES E. STEVENS

CARLSON ROAD REALTY
TRUST
BK. 45404-372 (1/29/10)
90.92 ACRES

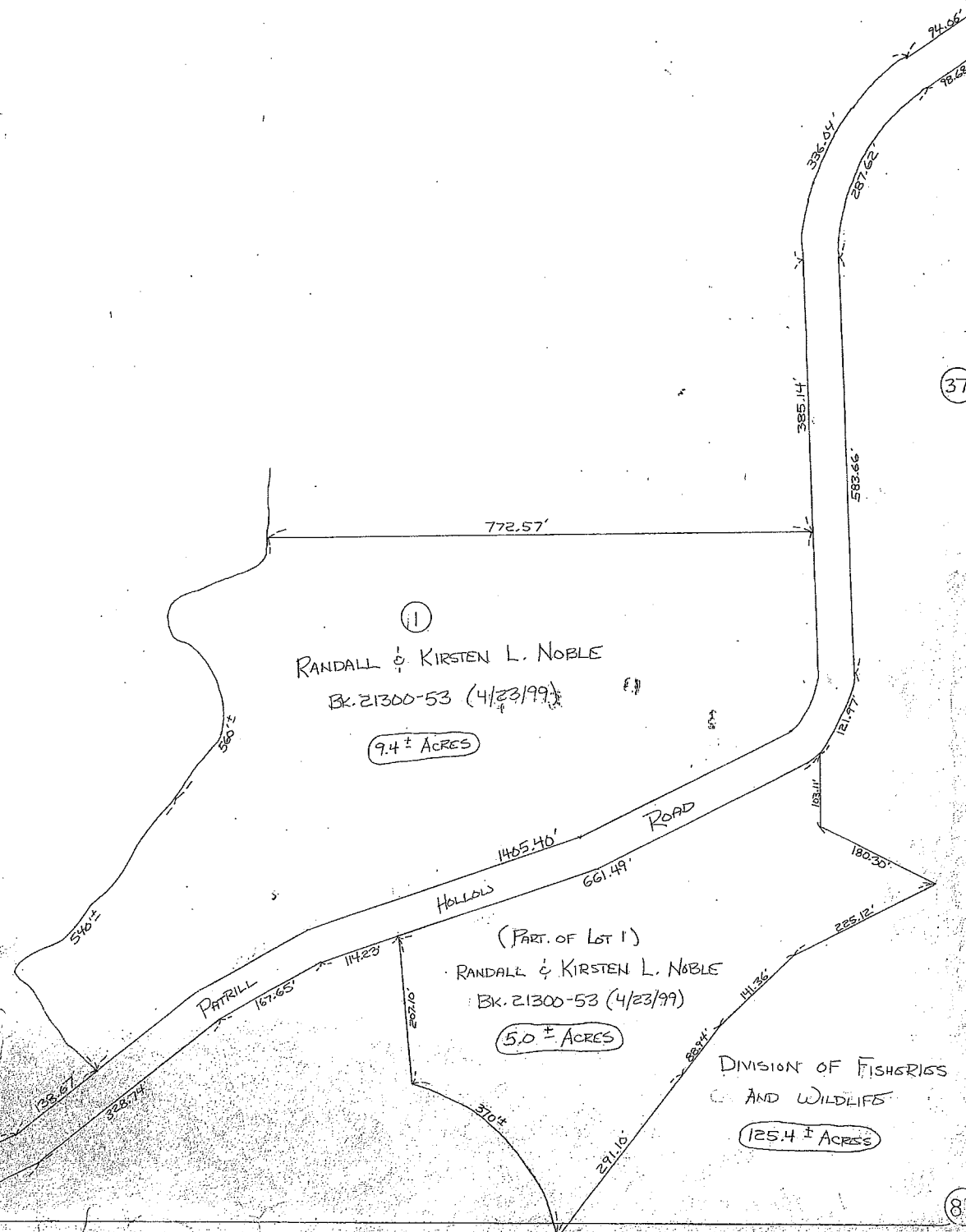
80

DIVISION OF FISHERIES & WILDLIFE

BK. 14618-167 (10/16/92)

522.2 ± ACRES

83



1
RANDALL & KIRSTEN L. NOBLE
BK. 21300-53 (4/23/99)

9.4 ± ACRES

(PART OF LOT 1)
RANDALL & KIRSTEN L. NOBLE
BK. 21300-53 (4/23/99)

5.0 ± ACRES

DIVISION OF FISHERIES
AND WILDLIFE
125.4 ± ACRES

37

81