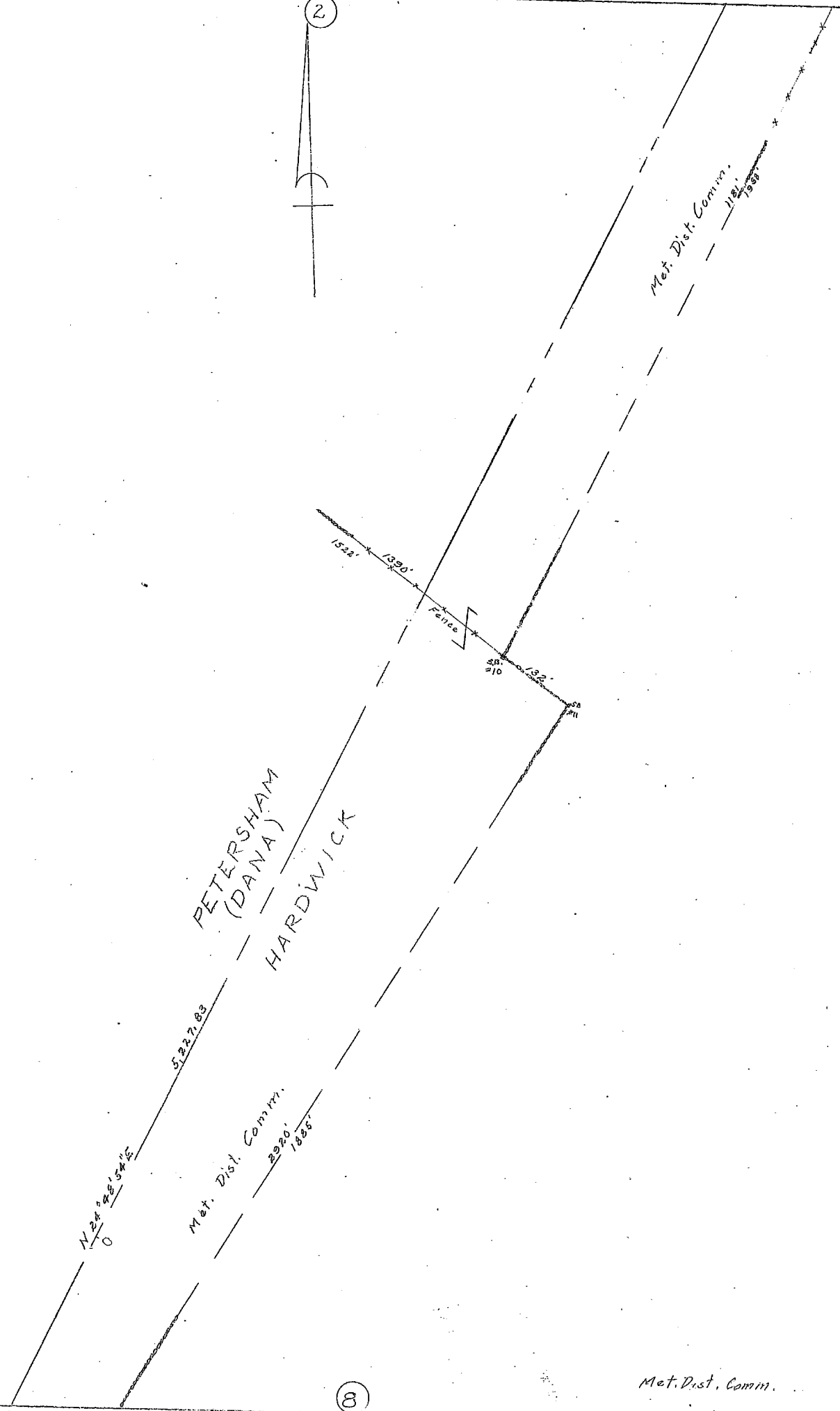
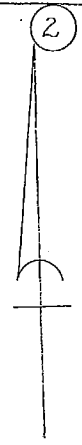


Met. Dist. Comm.
Bk 2771 Pg 104 1940
162.6 Acres (Hardwick)

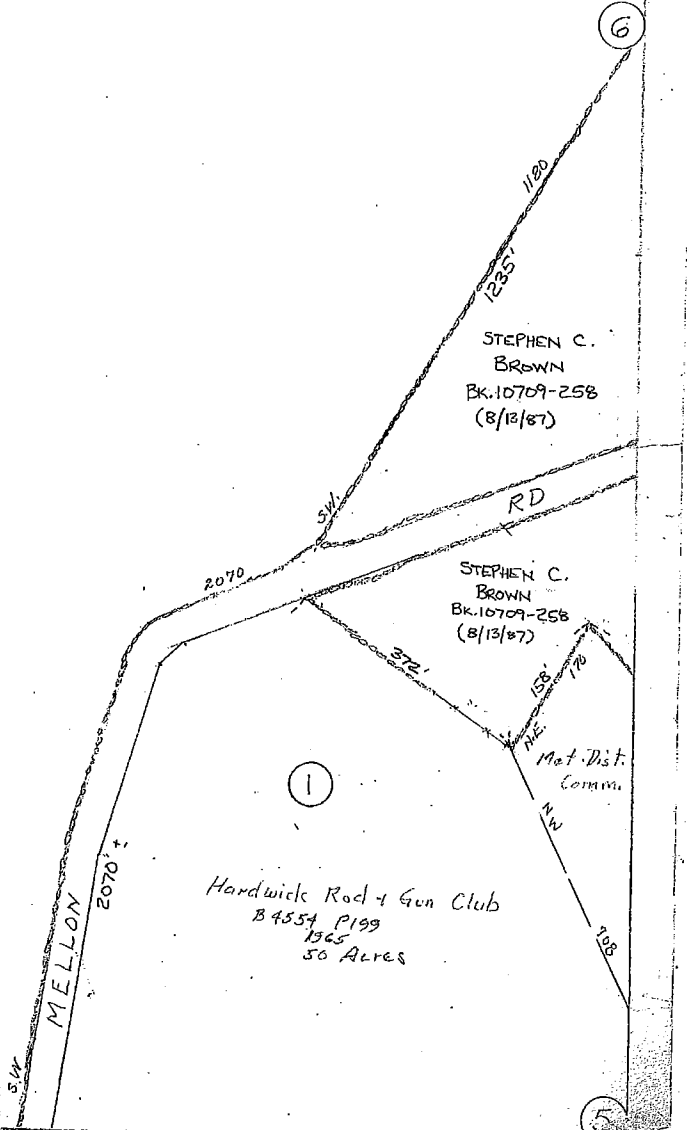


PETERSHAM
(DANA)
HARDWICK

Met. Dist. Comm.
2920'
1936'

Met. Dist. Comm.
1182'
1936'

Met. Dist. Comm.



STEPHEN C.
BROWN
Bk. 10709-258
(8/12/87)

STEPHEN C.
BROWN
Bk. 10709-258
(8/13/87)

Hardwick Rod & Gun Club
B4554 P199
1965
50 Acres

Met. Dist.
Comm.

1

6

8

7

Scale 1" = 100'