

Met. Dist. Comm.

70

1795.45'

COMMONWEALTH OF MASSACHUSETTS
Bk. 7093-198 (8/22/80)
45.50 ACRES
(SEE P. Bk. 456 P. 67)

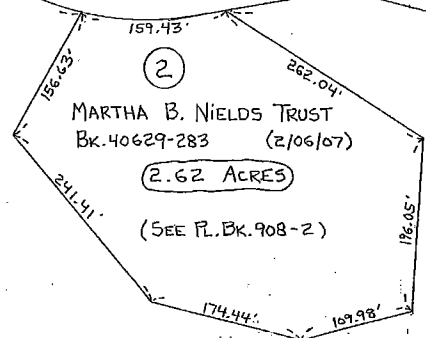
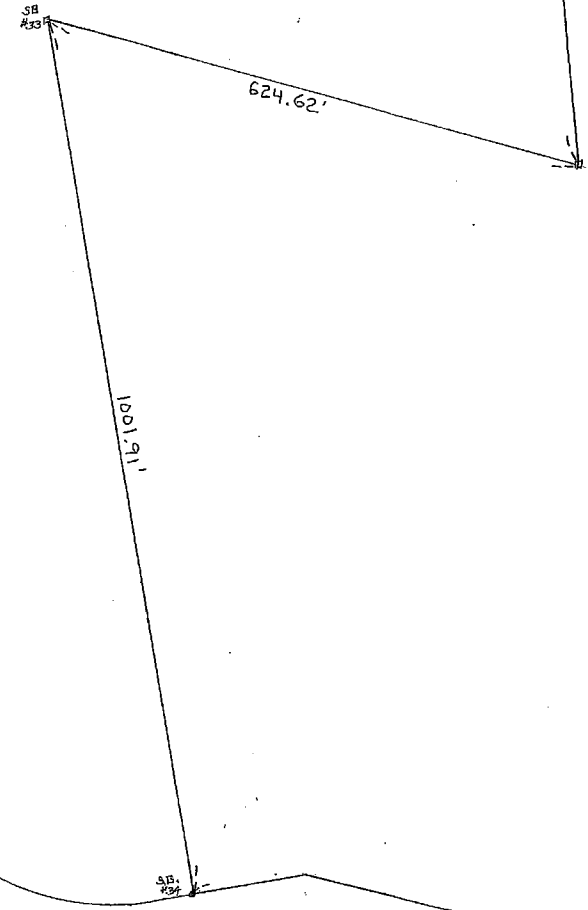
Met. Dist Comm.

71A

480
Gate #13

GREENWICH
2880'±

NEW ENGLAND FORESTRY FOUNDATION, INC.
Bk. 52495-109 (6/30/14)
85.78 ACRES



NEW ENGLAND FORESTRY FOUNDATION, INC.
Bk. 52495-109 (6/30/14)
85.78 ACRES

1

MELLON ROAD
2240'±
2365'±

COMMONWEALTH OF MASSACHUSETTS
Bk. 7093-198 (8/22/80)
205.04 ACRES

20

73

RD

2355'

71