

EDWARD & JULIA LUBELCZYK  
BK. 27281-194 (8/22/02)

17 ± ACRES

DONALD E. & JANE M. DESTARDINS  
BK. 6545-260 (8/17/78)

13.75 ACRES

- TRACT TWO -

MARJORIE CUMMINGS  
GOODIN, ET. AL.  
BK. 7434-210 (3/5/82)

6 ± ACRES

PAUL R. HAWLEY  
BK. 8090-42 (2/14/84)

15.8 ACRES

ARTHUR C., JR. & PENNY S. PELLEGRINI  
BK. 10112-171 (12/31/86)

14.103 ACRES

JOANNA L. CHRISTENSEN  
BK. 14409-92 (7/29/92)

2.50 ACRES

ROBERT T. & KATHLEEN M. TAFT  
(BK. 13108-288)

JAMES A. & ANGELIQUE M. BROUSSARD  
BK. 53489-277 (2/20/15)

1.418 ACRES

PHILIP & RENEE P. JURCZYK  
BK. 41772-128 (9/7/87)

3.316 ACRES

BANFILL IRREVOCABLE TRUST  
BK. 50232-324 (1/3/13)

4.567 ACRES

DENIS R., JR. & PATRICIA L. PETE  
BK. 55769-322 (8/8/16)

3.75 ACRES

BRIAN C. & SUSAN M. RUSSELL  
BK. 54220-122 (8/27/15)

11.5 ± ACRES

JOEL J. HARDER  
BK. 51160-177 (7/3/13)

12 ± ACRES

MARK P. & LINDA M. CHEVRETTE  
BK. 18172-384 (8/15/96)

4.1 ± ACRES

(SEE P.L. BK. 706 P. 99)

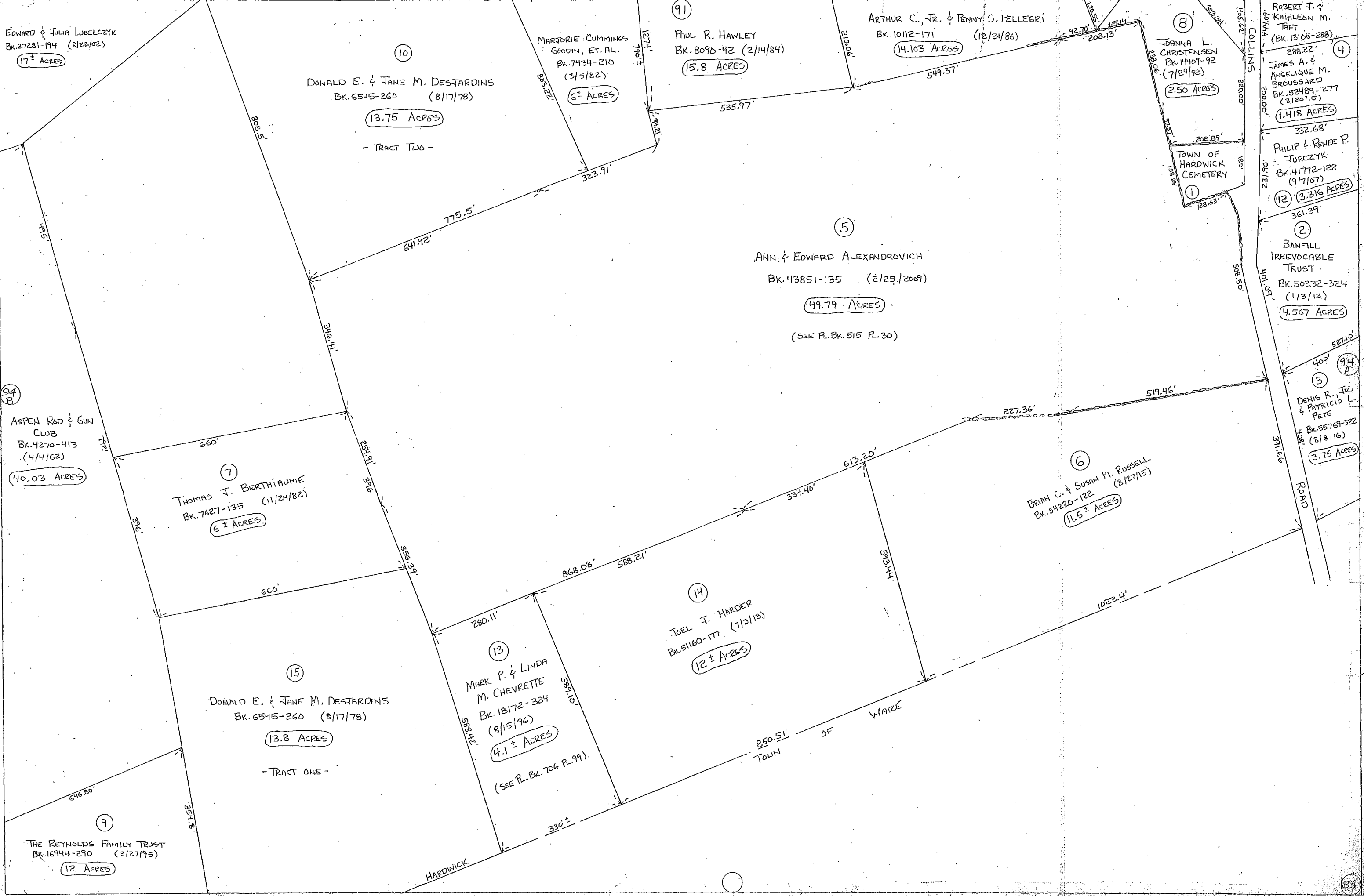
DONALD E. & JANE M. DESTARDINS  
BK. 6545-260 (8/17/78)

13.8 ACRES

- TRACT ONE -

THE REYNOLDS FAMILY TRUST  
BK. 16944-290 (3/27/95)

12 ACRES



94 B

94