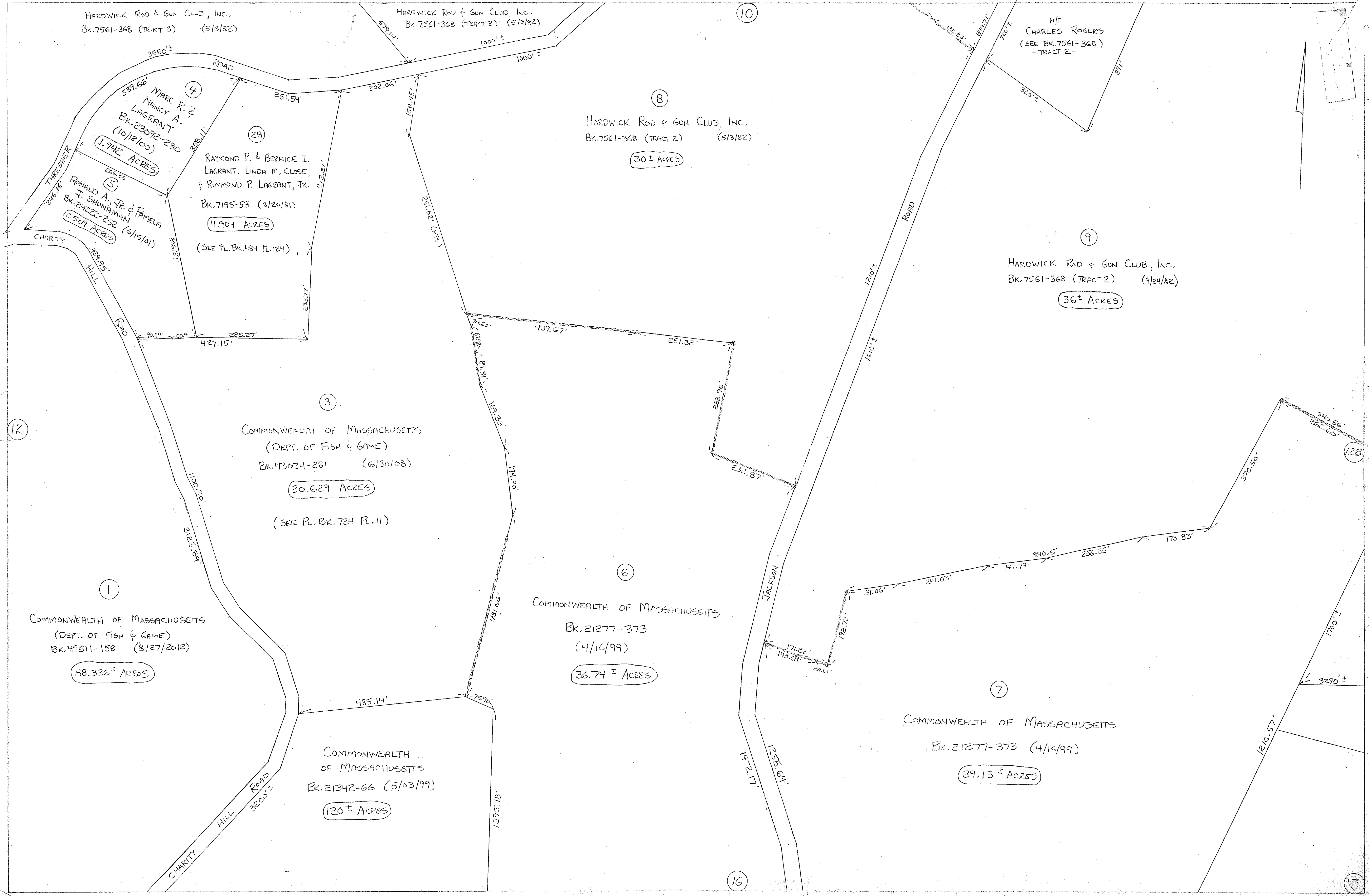


HARDWICK ROD & GUN CLUB, INC.
BK. 7561-368 (TRACT 3) (5/3/82)

HARDWICK ROD & GUN CLUB, INC.
BK. 7561-368 (TRACT 2) (5/3/82)

N/F
CHARLES ROGERS
(SEE BK. 7561-368)
-TRACT 2-



12

10

8

9

3

6

7

12B

13

1

COMMONWEALTH OF MASSACHUSETTS
(DEPT. OF FISH & GAME)
BK. 49511-158 (8/27/2012)
58.326 ± ACRES

4
MARC R. &
NANCY A.
LAGRANT
BK. 23092-280
(10/12/00)
1.942 ACRES

2B
RAYMOND P. & BERNICE I.
LAGRANT, LINDA M. CLOSE,
& RAYMOND P. LAGRANT, JR.
BK. 7195-53 (3/20/81)
4.904 ACRES
(SEE PL. BK. 484 PL. 124)

HARDWICK ROD & GUN CLUB, INC.
BK. 7561-368 (TRACT 2) (5/3/82)
30 ± ACRES

HARDWICK ROD & GUN CLUB, INC.
BK. 7561-368 (TRACT 2) (9/24/82)
36 ± ACRES

COMMONWEALTH OF MASSACHUSETTS
(DEPT. OF FISH & GAME)
BK. 43034-281 (6/30/08)
20.629 ACRES
(SEE PL. BK. 724 PL. 11)

COMMONWEALTH OF MASSACHUSETTS
BK. 21277-373
(4/16/99)
36.74 ± ACRES

COMMONWEALTH OF MASSACHUSETTS
BK. 21277-373 (4/16/99)
39.13 ± ACRES

COMMONWEALTH
OF MASSACHUSETTS
BK. 21342-66 (5/03/99)
120 ± ACRES

5
RONALD A., JR. & PAMELA
T. SHONAMAN
BK. 24222-252 (6/15/01)
2.509 ACRES

ROAD
3550' ±
539.66'
251.54'
202.06'
158.85'
358.11'
266.35'
246.16'
216.16'
488.95'
438.95'
HILL
ROAD
3200' ±
3123.89'
1100.80'
90.99'
60.91'
285.27'
427.15'
233.77'
413.21'
413.21'
251.02' (AT'S.)
34.20'
30.09'
158.85'
171.90'
481.66'
75.90'
1395.18'

ROAD
1201' ±
1610' ±
288.96'
232.87'
251.32'
439.67'
171.82'
143.69'
28.13'

JACKSON
ROAD
1255.64'
1172.17'

ROAD
132.22'
544.71'
760' ±
320' ±
877'
340.56'
262.60'
370.65'
173.83'
147.79'
256.35'
940.5'
241.03'
131.06'
192.72'
171.82'
143.69'
28.13'
3290' ±
1210.57'