

SHIRLEY M. HOMANS  
Bk. 5088-18 (1/6/71)  
(SECOND PARCEL)

14.458 ACRES

AUSTRO-AMERICAN REAL ESTATE LTD.

Bk. 32101-117 (10/30/63)

95.866 ACRES

CHARLES M. & BARBARA E. ZEPP

Bk. 16387-186 (6/24/94)

83.429 ACRES

(SEE MAP 138 LOT 11)

RICHARD P., JR. & BONNIE J. MARRONE

Bk. 38656-255 (3/30/06)

40.019 ACRES

GEORGE H. & IRENE B. PROUTY  
Bk. 17414-64 (10/10/95)

4.972 ACRES

VALERIE RUGGLES  
Bk. 45669-367 (11/18/10)

4.231 ACRES

RESILIENT INVESTMENTS, LLC  
Bk. 53766-227 (5/27/15)

5.400 ACRES

LISA K. PROUTY  
Bk. 15046-80 (3/29/93)

6.335 ACRES

RESILIENT INVESTMENTS LLC  
Bk. 53766-227 (5/27/15)

5.478 ACRES

JOHN G., JR. &  
NICOLE M. LINNER  
Bk. 54828-311 (1/15/16)

5.697 ACRES

LAMBSTOWNE REALTY TRUST

Bk. 22542-299 (4/28/00)

67.459 ± ACRES

(SEE MAP 96 LOT 4)

SEAN A. & NANCY J. BROCK

Bk. 35440-1 (1/03/05)

12.8 ± ACRES

PATRICIA A. LANG REVOCABLE LIVING TRUST  
Bk. 47125-253 (2/25/11)

6.156 ACRES

GILSON RIBEIRO  
Bk. 56861-125 (3/17/17)

1.731 ACRES

LYLE J. BROOKS  
Bk. 51404-384 (8/26/13)

1.3 ACRES

RAYMOND G., JR. & PAMELA B. ROBINSON

Bk. 33705-152 (5/26/04)

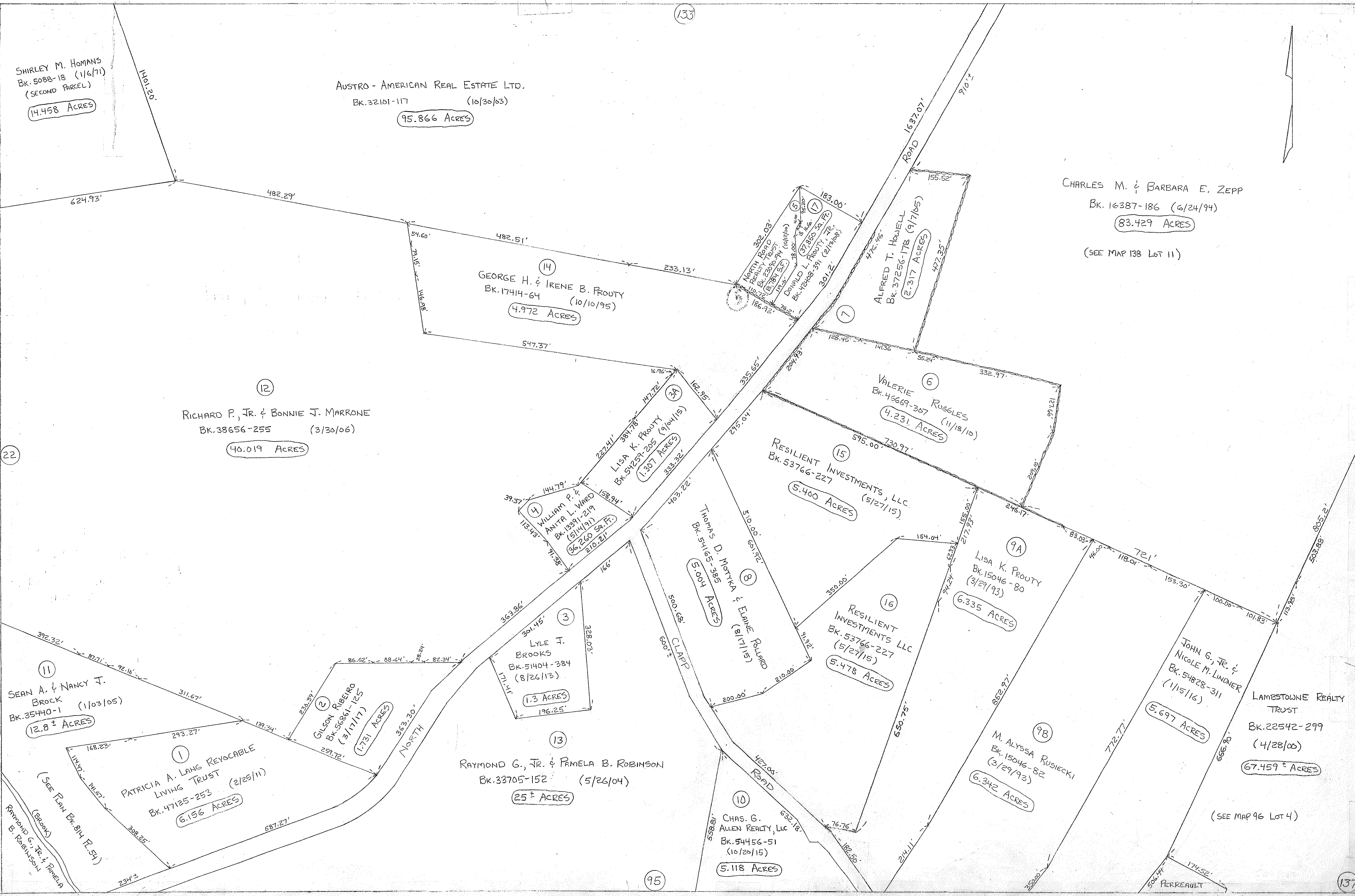
25 ± ACRES

CHAS. G. ALLEN REALTY, LLC  
Bk. 54456-51 (10/20/15)

5.118 ACRES

M. ALYSSA RUSIECKI  
Bk. 15046-82 (3/29/93)

6.342 ACRES



22

133

95

137

(JUNCTION MAP)