

MAPLE HILL FARM TRUST  
Bk. 8322-381 (8/15/84) TRACT #2  
7.98 ACRES

SOPHIE K. &  
CLAUDIO SANTORO,  
JR.  
Bk. 45965-339  
(6/28/10)  
3.55 ACRES

MAPLE HILL FARM TRUST  
TRUST  
31.8 ± ACRES  
154' ±

3  
MAPLE HILL FARM TRUST  
Bk. 8322-381 (8/15/84)  
-TRACT #1-  
18.5 ± ACRES

MAPLE HILL FARM TRUST  
Bk. 8322-381 (8/15/84)  
-TRACT #1-  
96 ± ACRES

5  
MAPLE HILL FARM TRUST  
Bk. 22132-189 (12/10/99) - PARCEL A-  
Bk. 19618-71 (2/10/98)  
29.842 ACRES  
(SEE PL. Bk. 749 PL. 110)

2  
MAPLE HILL FARM TRUST  
Bk. 22132-189 (12/10/99)  
-PARCEL B-  
7.741 ACRES

6  
JOHN B., JR. & LINDA KLEM TOMASI  
Bk. 22567-378 (4/20/2000)  
3.0 ± ACRES

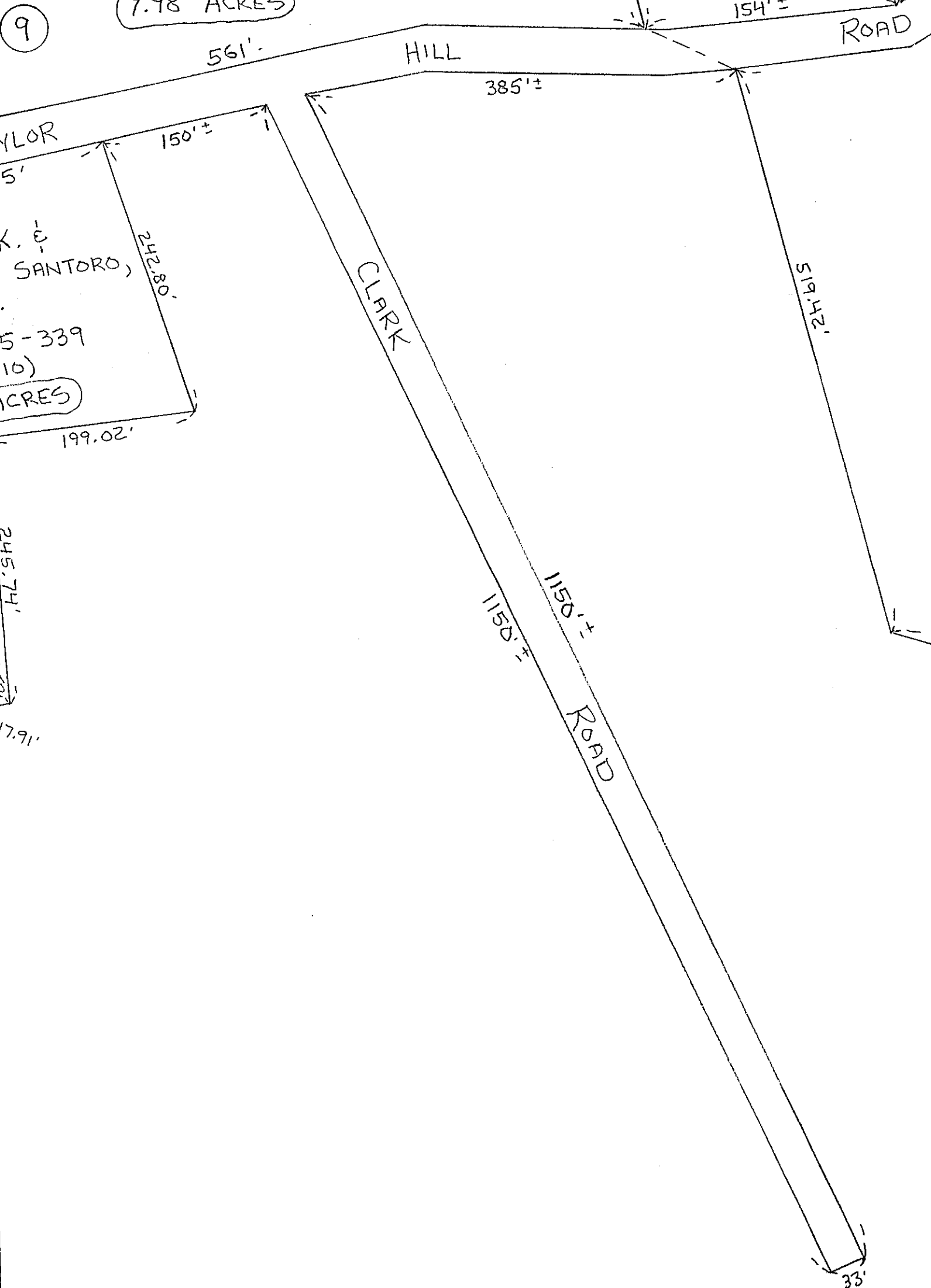
4  
PETER, JR. & HELEN S. KING  
CHARLES S., JR. & MARGARET B. WHITE  
Bk. 23837-175 (4/13/2001)  
93 ± ACRES

1  
JOHN B., JR. & LINDA KLEM  
TOMASI  
Bk. 22567-378 (4/20/2000)  
9.4 ACRES

7  
PAUL R. URBAN &  
PHYLLIS A. DWELLY  
Bk. 9473-273 (6/2/86)  
110 ± ACRES

ROBERT E. & PHYLLIS A. KLEM  
Bk. 8349-194 (9/4/84)  
28 ± ACRES

RICHARD GERULAITIS  
Bk. 13304-344 (3/19/91)



142

139