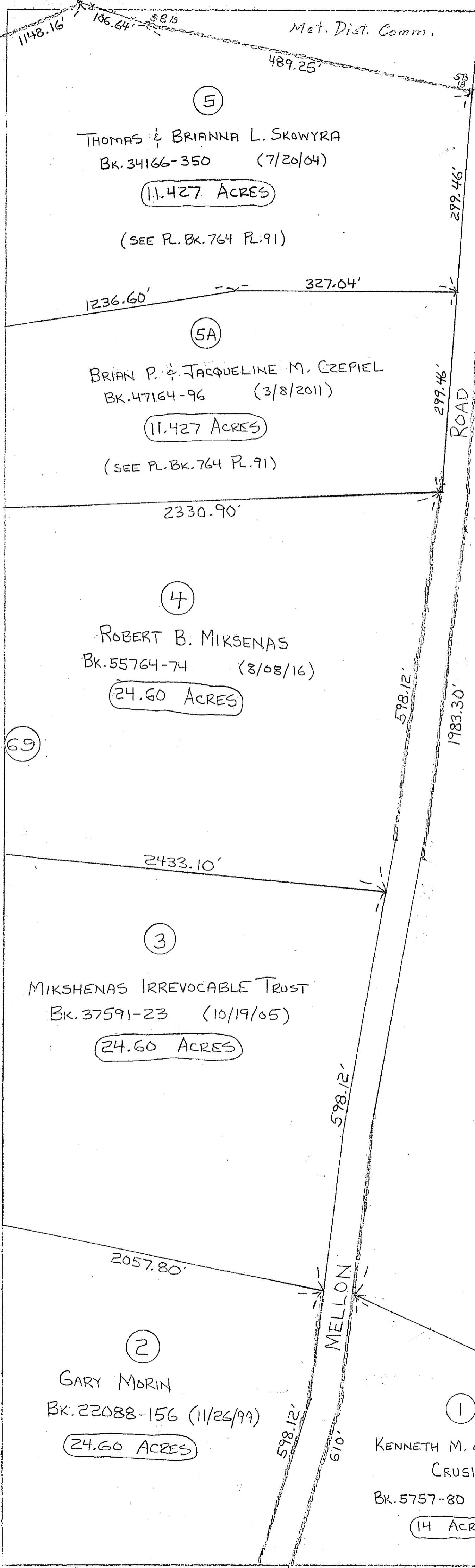


Met. Dist. Comm.



THOMAS & BRIANNA L. SKOWYRA
BK. 34166-350 (7/20/04)

11.427 ACRES

(SEE PL. BK. 764 PL. 91)

BRIAN P. & JACQUELINE M. CZEPIEL
BK. 47164-96 (3/8/2011)

11.427 ACRES

(SEE PL. BK. 764 PL. 91)

ROBERT B. MIKSHENAS
BK. 55764-74 (8/08/16)

24.60 ACRES

MIKSHENAS IRREVOCABLE TRUST
BK. 37591-23 (10/19/05)

24.60 ACRES

GARY MORIN
BK. 22088-156 (11/26/99)

24.60 ACRES

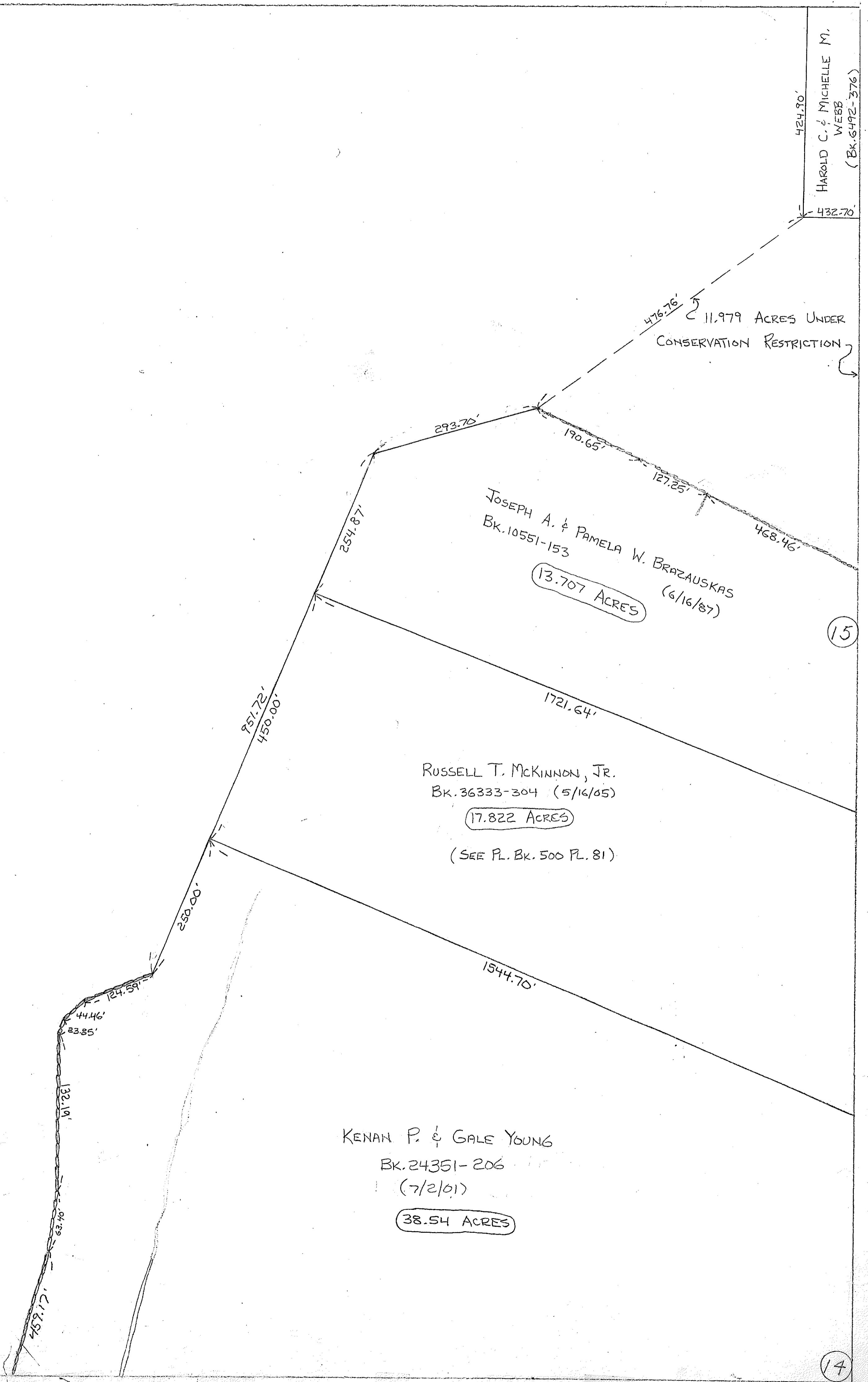
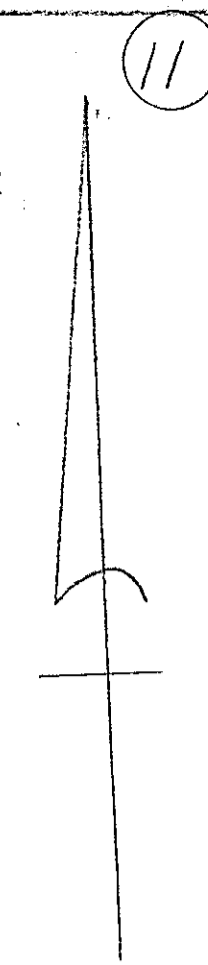
KENNETH M. & THERESA D. CRUSIUS
BK. 5757-80 (7/9/75)

14 ACRES

HAROLD C. & MICHELLE M. WEBB
BK. 14997-157 (3/4/93)

133.037 ACRES

NEED TO UPDATE MAP 17



HAROLD C. & MICHELLE M. WEBB
(BK. 6492-376)

11.979 ACRES UNDER
CONSERVATION RESTRICTION

JOSEPH A. & PAMELA W. BRAZSAUSKAS
BK. 10551-153

13.707 ACRES

(6/16/87)

RUSSELL T. MCKINNON, JR.
BK. 36333-304 (5/16/05)

17.822 ACRES

(SEE PL. BK. 500 PL. 81)

KENAN P. & GALE YOUNG
BK. 24351-206

(7/2/01)

38.54 ACRES

17

14