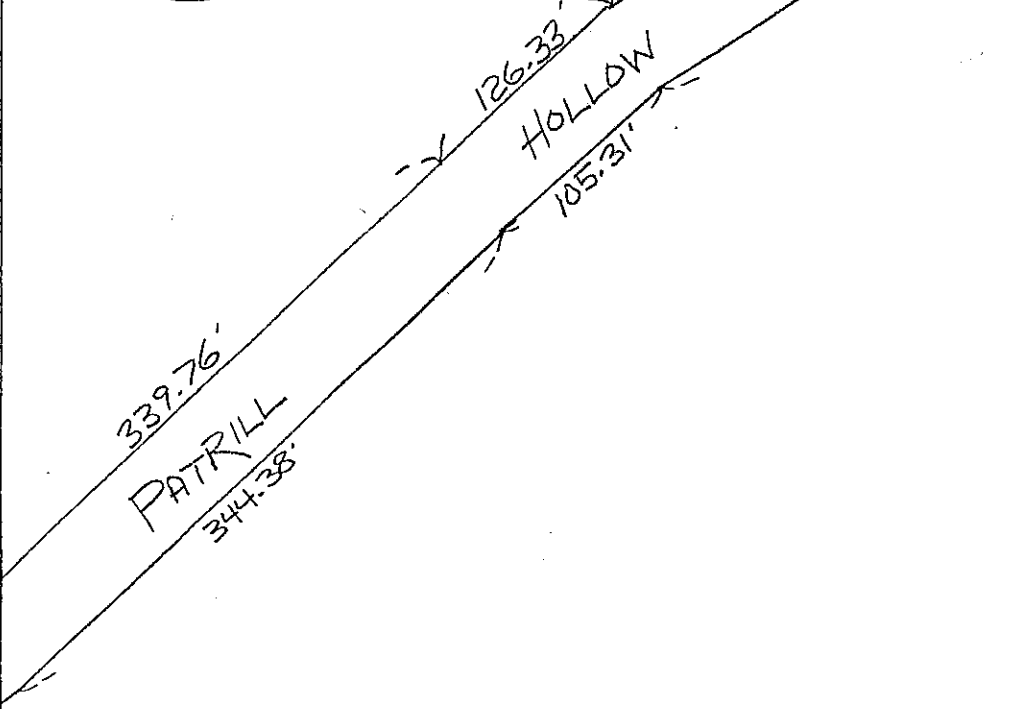


DIVISION OF FISHERIES & WILDLIFE
Bk. 14618-167 (10/16/92)

522.2 ± ACRES



KENNETH J. & JILL STOLGITIS
Bk. 21561-21 (6/29/99)

5.414 ACRES

DIVISION OF FISHERIES & WILDLIFE

Bk. 14618-167 (10/16/92)

125.4 ± ACRES

KENNETH J. & JILL STOLGITIS
Bk. 18271-272 (9/25/96)

72.361 ACRES

AURELIO MARCO & WENDY BARTON
BOLOGNESI

Bk. 14337-160 (6/29/92)

23.5 ACRES

CHRISTOPHER R. & MEGEN S.
TALBOT

Bk. 40970-89

5.148 ACRES

(4/11/07)

KENNETH J. & JILL STOLGITIS
Bk. 18271-272 (9/25/96)

2.471 ACRES

MICHAEL G. MOTIAN &
SANDRA J. MELKONIAN

Bk. 52007-185 (2/3/14)

2.007 ACRES

STANLEY D. T. WHITE

Bk. 17835-260

(4/18/96)

138.00 ACRES

(PART OF MAP 41 LOT 3)

STANLEY D. T. WHITE
Bk. 17835-260 (4/18/96)

138.00 ACRES

(PART OF MAP 41 LOT 3)

STOLGITIS
Bk. 23278-145
(30.05 ACRES)

ALMA C. &
MERLE G. BINGHAM
Bk. 43179-331
(8/07/08)
2.473 ACRES

81

34

3

5

4

1

2

38

40

37