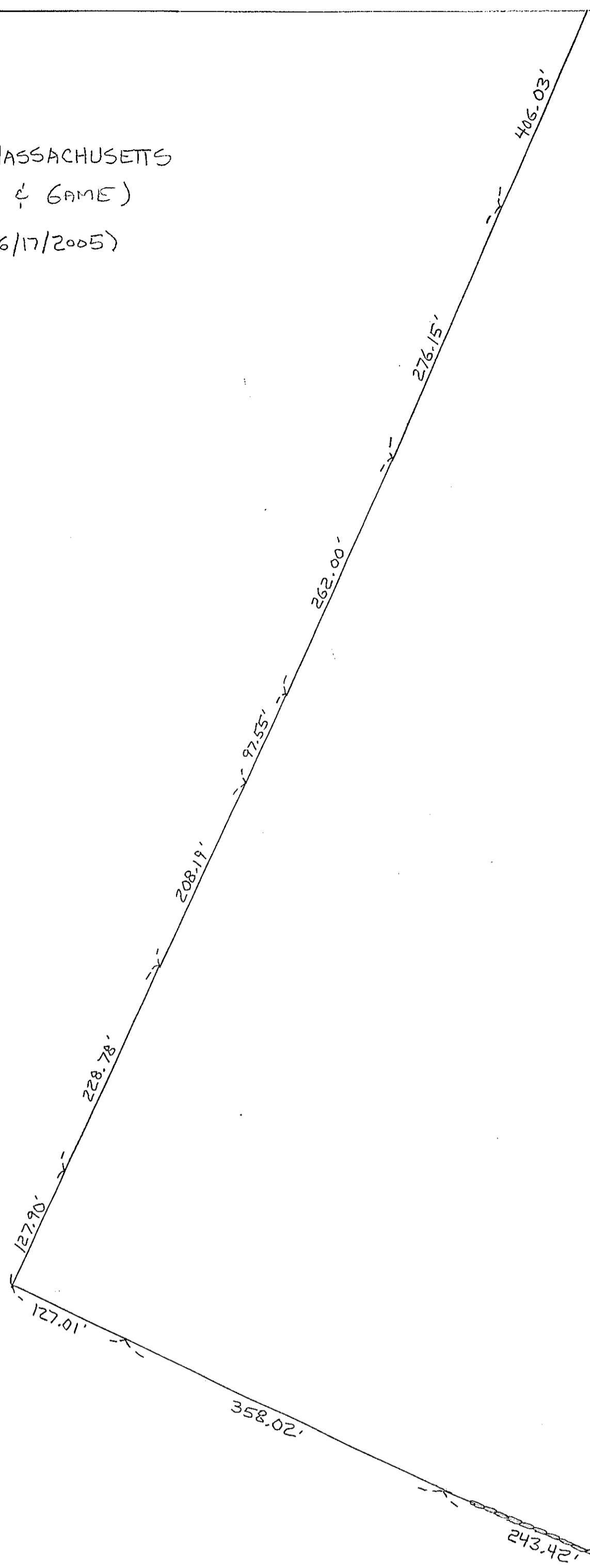


COMMONWEALTH OF MASSACHUSETTS
(DEPARTMENT OF FISH & GAME)

Bk. 36585-358 (6/17/2005)

172.165 ACRES



85

STANLEY D.T. & ABBIE M.C. WHITE
Bk. 38656-250 (3/30/06)

43.5 ± ACRES

CLYDE A. & MARILYN
R. BROWN
Bk. 26472-247 (4/27/2002)

3.50 ACRES

(SEE P.L. Bk. 777 PL. 125)

ERIK S. SHAFER
Bk. 45674-387 (4/14/10)

3.832 ACRES

GREGORY B. & PAMELA T. BROWN
Bk. 49874-344 (10/31/12)

4.25 ACRES

(SEE P.L. Bk. 767 PL. 43)

CHARLES S. & JEAN T. LUBELCZYK
Bk. 14498-123 (9/3/92)

55.95 ACRES

RICHARD N. SULLIVAN
Bk. 40391-99 (12/12/2008)

1.75 ACRES

(SEE P.L. Bk. 892 PL. 99)

CHARLES S. &
JEAN T. LUBELCZYK
Bk. 14498-123
(9/3/92)

3.234 ACRES

KENDALL S. HOLMES & ELIZABETH A.
LANG-HOLMES
Bk. 57915-12 (10/20/17)

7.97 ACRES

CHESTNUT FARMS NOMINEE TRUST
Bk. 41448-355 (7/6/07)

78 ± ACRES

(TRACT I - PARCEL C)

DO DECA
NOMINEE TRUST
Bk. 51389-349
(8/22/2013)

5.72 ACRES

DO DECA NOMINEE TRUST
Bk. 51389-349 (8/22/2013)

15.64 ACRES

(SEE PLAN Bk. 662 PLAN 82)

PAUL R. MAILHOT, JR. & CRYSTAL D.
LUBELCZYK

Bk. 18117-206 (7/26/96)

29.639 ACRES

COMMONWEALTH OF MASSACHUSETTS
(DEPARTMENT OF FISH & GAME)

Bk. 36585-358 (6/17/2005)

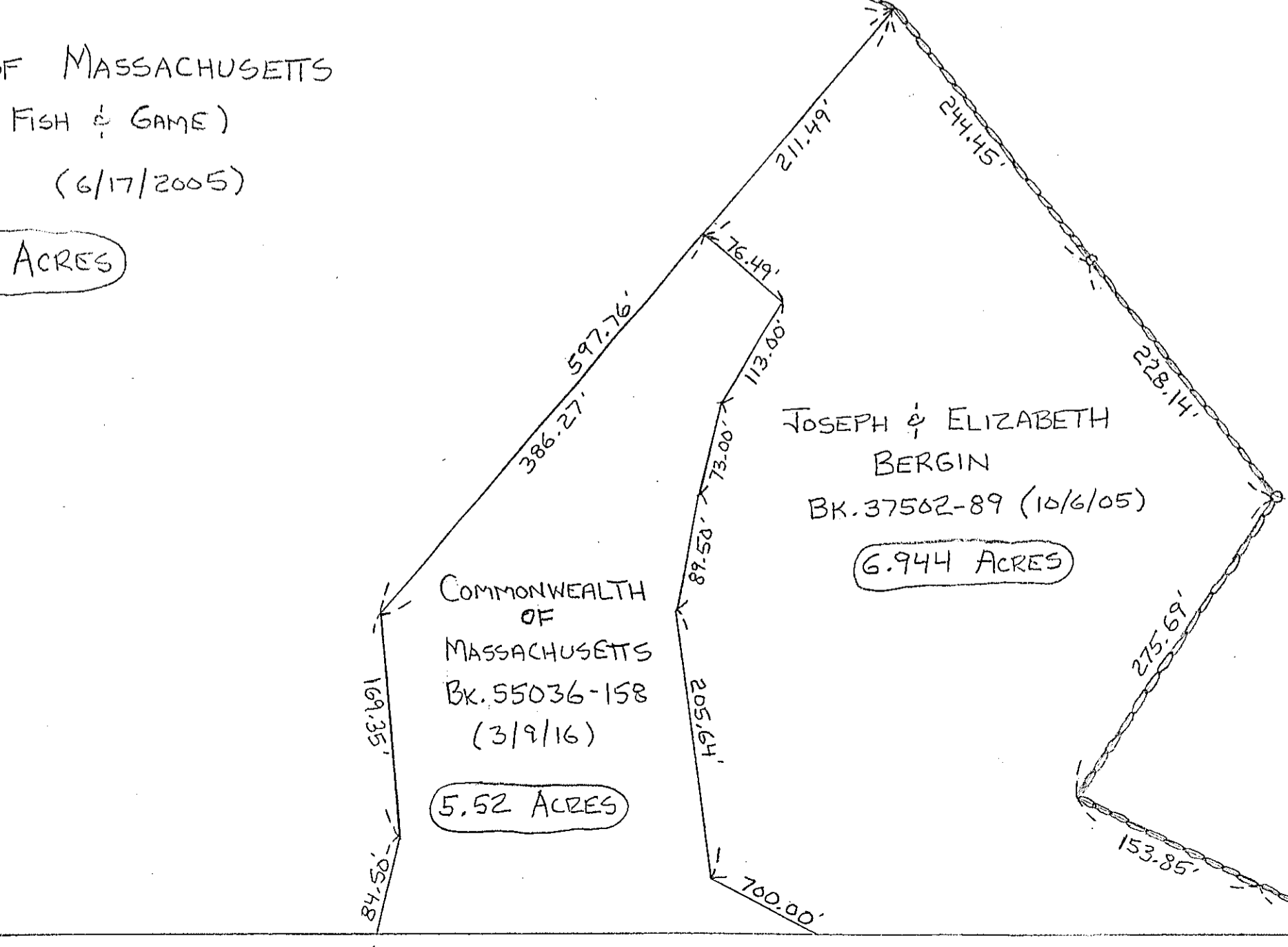
172.165 ACRES

COMMONWEALTH OF
MASSACHUSETTS
Bk. 55036-158
(3/9/16)

5.52 ACRES

JOSEPH & ELIZABETH
BERGIN
Bk. 37562-89 (10/6/05)

6.944 ACRES



CZESKY ROAD

STREET

TURKEY

STREET

46

43

44

40

9

7

4

2

8

6

3

1

5