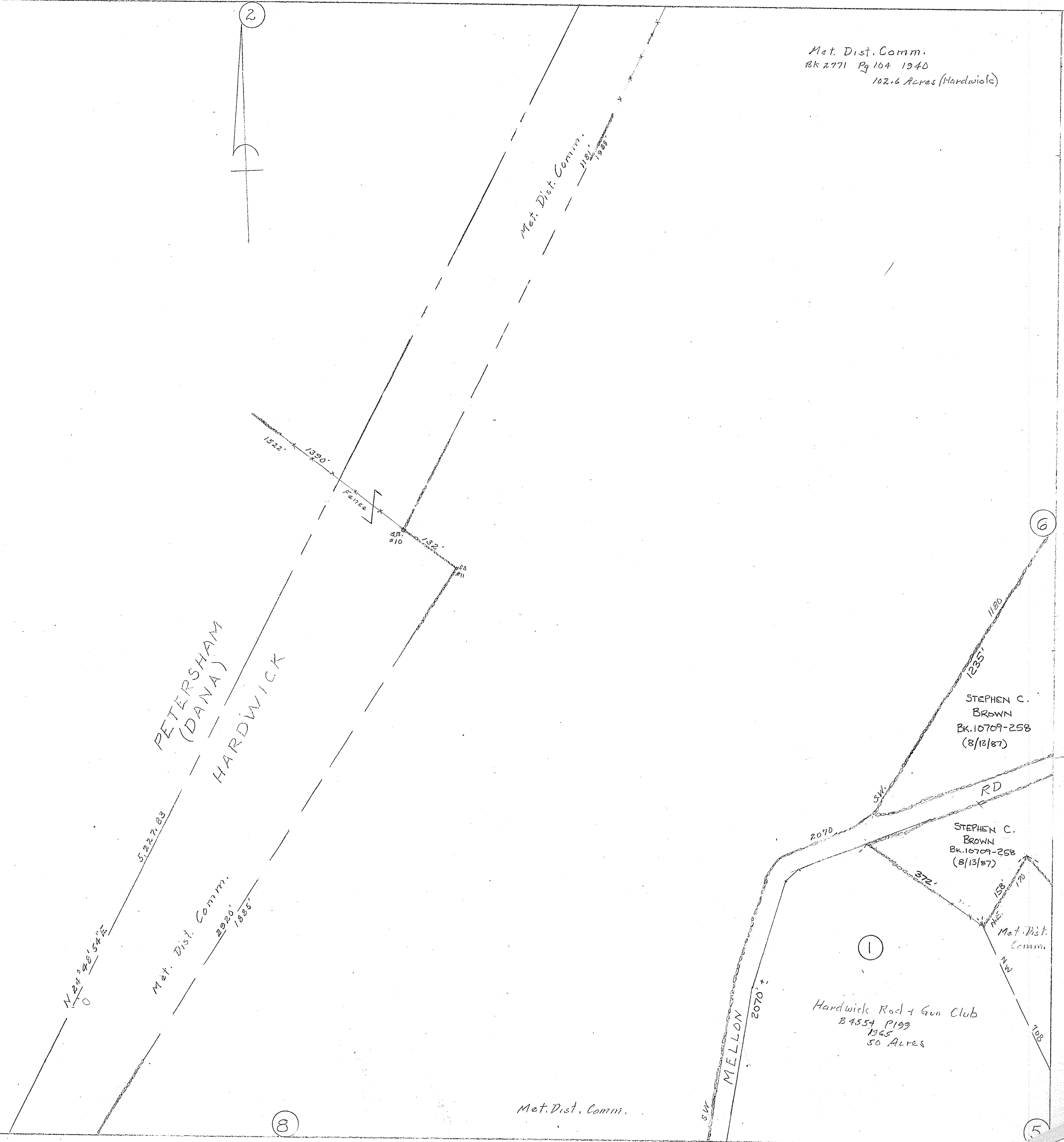
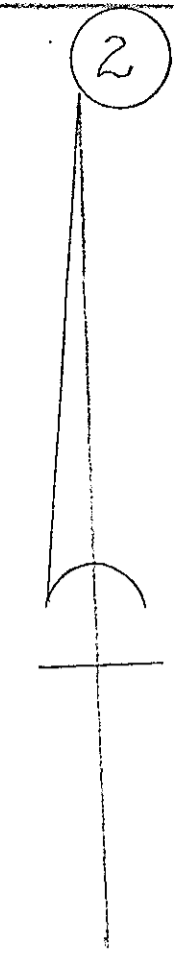


Met. Dist. Comm.
Bk 2771 Pg 104 1940
102.6 Acres (Hardwick)



PETERSHAM
(DANA)
HARDWICK

Met. Dist. Comm.
2920'
1895'

Met. Dist. Comm.
1181'
1933'

STEPHEN C.
BROWN
Bk. 10709-258
(8/13/87)

STEPHEN C.
BROWN
Bk. 10709-258
(8/13/87)

Hardwick Rod & Gun Club
8454 P199
1965
50 Acres

Met. Dist. Comm.

MELLON