

Met. Dist. Comm.

70

1795.45'

COMMONWEALTH OF MASSACHUSETTS  
BK. 7093-198 (8/22/80)

45.50 ACRES

(SEE P. BK. 456 P. 67)

Met. Dist Comm.

71A

A80  
Gate  
#13

GREENWICH  
2880'±

NEW ENGLAND FORESTRY FOUNDATION, INC.  
BK. 52495-109 (6/30/14)

85.78 ACRES

SB  
#33

624.62'

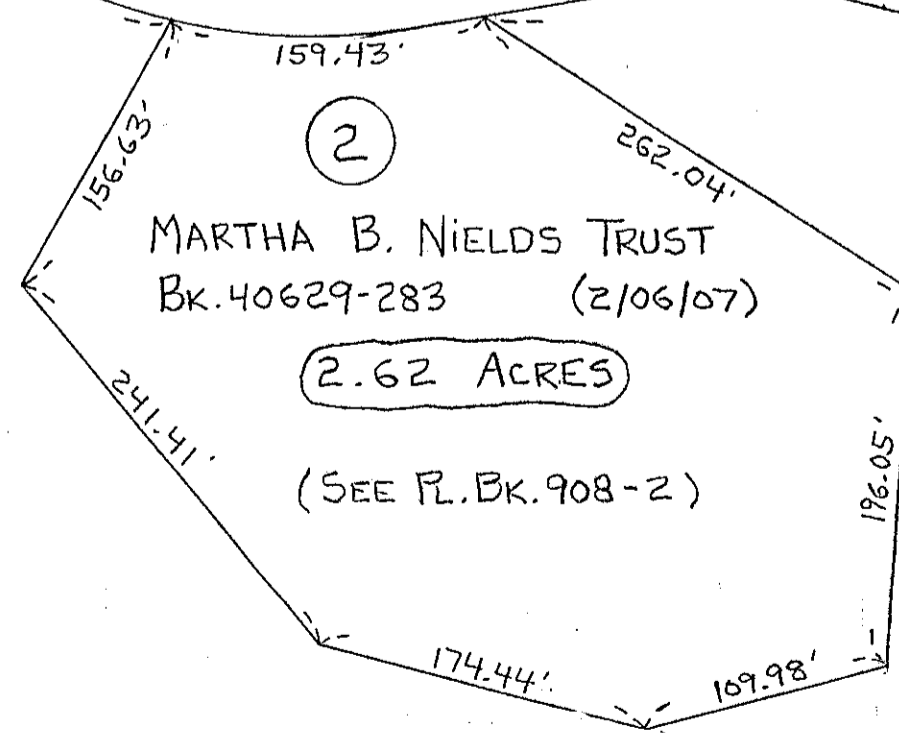
1001.91'

SB  
#32

COMMONWEALTH OF MASSACHUSETTS  
BK. 7093-198 (8/22/80)

205.04 ACRES

20



NEW ENGLAND FORESTRY FOUNDATION, INC.  
BK. 52495-109 (6/30/14)

85.78 ACRES

73

MELLON ROAD  
2240'  
2225'

MELLON RD

2047'±

1020'±

1617'

2355'

71