

77

ANTHONY L., JR. & LAURIE J.  
SALVADORE  
Bk. 35007-93 (11/4/2004)

1674.50'

34.362 ACRES

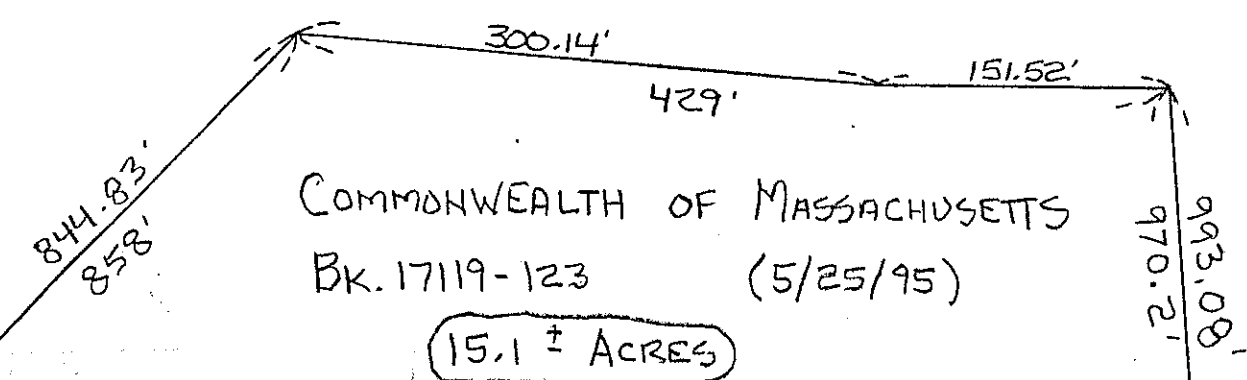
78

858.00'

DIVISION OF FISHERIES & WILDLIFE  
Bk. 14618-167 (10/16/92)

522.2 ± ACRES

34



81

79