

EAST QUABBIN
LAND TRUST, INC.
(BK. 30608-132)

⑤
EDWARD J. & JULIA S. LUBELCZYK
BK. 7059-151 (9/15/80)
83.70 ACRES

④
COMMONWEALTH OF MASSACHUSETTS
(DEPT. OF FISHERIES & WILDLIFE)
BK. 22738-181 (6/29/00)
45.36 ACRES

⑥
RYAN K. DENNIS
& LAURA B. DAVIES
BK. 41411-286 (6/29/07)
1.504 ACRES

③ (SEE P. 751-60)
DONALD W. & PAULA ROBERTS
BK. 22261-180 (1/26/00)
1.84 ACRES

⑦
DANIEL E. & SHARON HANSON
BK. 47090-161 (2/15/11)
PORTION OF 48.2 ACRES

②
THE MERTON B. BAKER TRUST
BK. 59382-6 (9/10/18)
57 ± ACRES

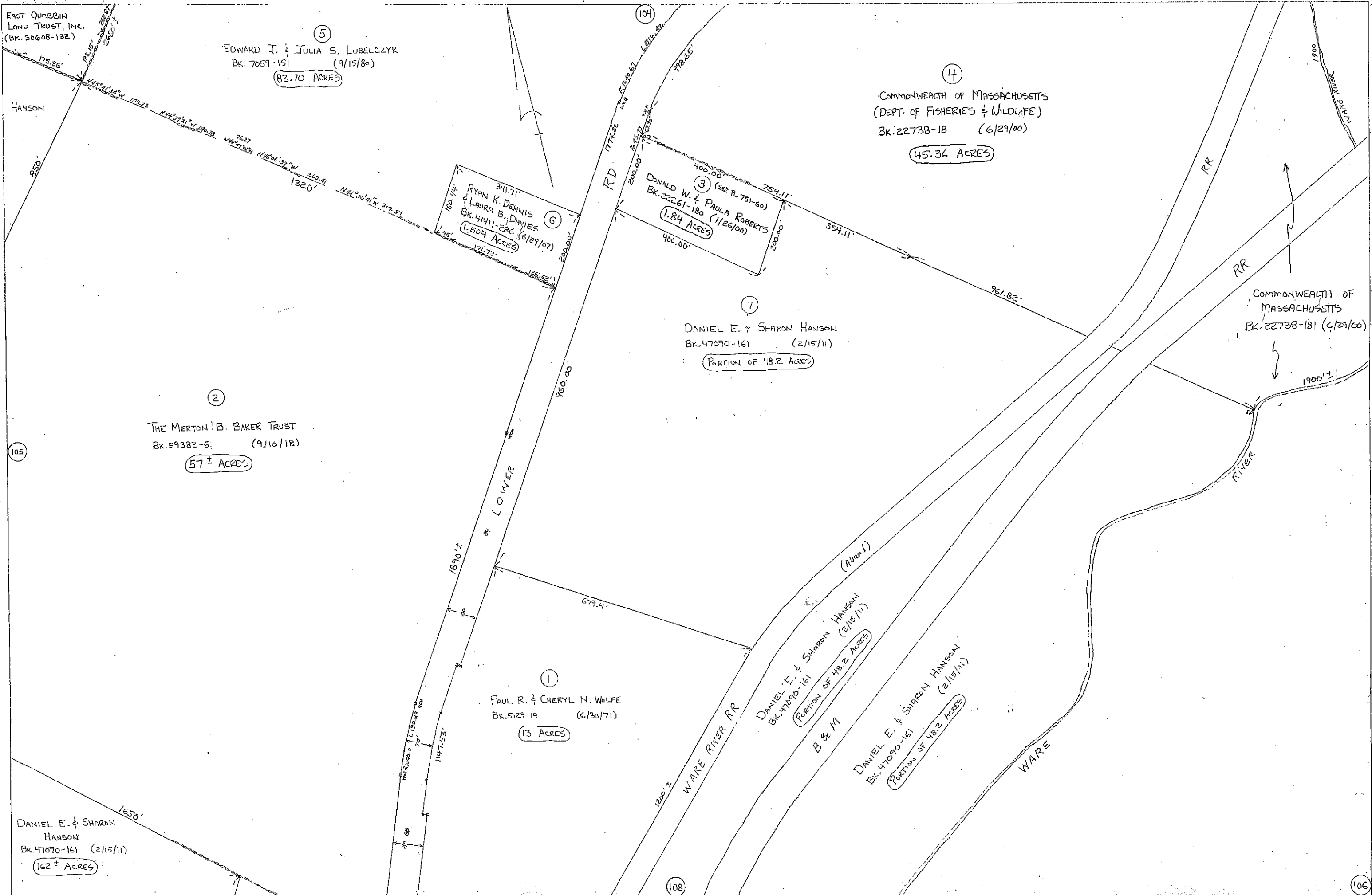
①
PAUL R. & CHERYL N. WOLFE
BK. 5129-19 (6/30/71)
13 ACRES

DANIEL E. & SHARON HANSON
BK. 47090-161 (2/15/11)
PORTION OF 48.2 ACRES
B & M

DANIEL E. & SHARON HANSON
BK. 47090-161 (2/15/11)
PORTION OF 48.2 ACRES

DANIEL E. & SHARON
HANSON
BK. 47090-161 (2/15/11)
162 ± ACRES

COMMONWEALTH OF
MASSACHUSETTS
BK. 22738-181 (6/29/00)



105

104

108

106