

TIMOTHY J. & JOANN
BUTKIEWICZ
(BK. 8819-334) 7/13/85
38.27 ACRES

URSULA M. ROSEN IRREVOCABLE TRUST
(1/27/06)
BK. 38287-371
42.34 ACRES

URSULA M. ROSEN IRREVOCABLE TRUST
(1/27/06)
BK. 38287-371
3.6 ACRES

URSULA M. ROSEN IRREVOCABLE TRUST
(1/27/06)
BK. 38287-371
(PORTION OF 42.34 ACRES)

WARE RIVER

147

1

3

4

117

125

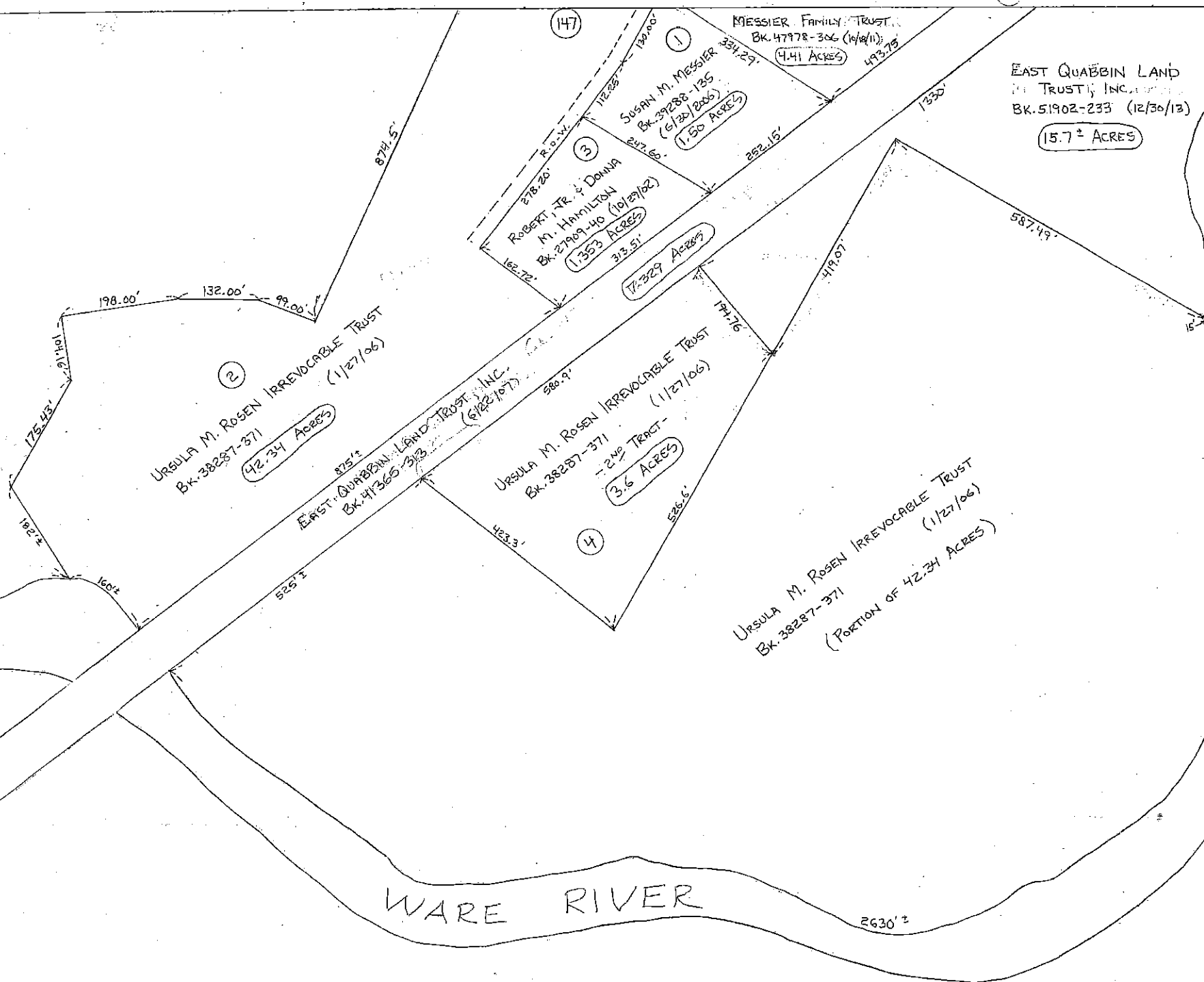
MESSIER FAMILY TRUST
BK. 47978-306 (10/10/11)
4.41 ACRES

SUSAN M. MESSIER
BK. 39288-135
(6/20/2006)
1.50 ACRES

ROBERT TR. & DONNA
M. HAMILTON
BK. 27909-40 (10/27/02)
1.353 ACRES

EAST QUABBIN LAND
TRUST, INC.
BK. 51902-233 (12/30/13)
15.7 ACRES

17.329 ACRES



2430'±

1665'±

198.00'
132.00'
99.00'
175.43'
192.2'

874.5'

147

1

3

4

117

125

MESSIER FAMILY TRUST
BK. 47978-306 (10/10/11)
4.41 ACRES

SUSAN M. MESSIER
BK. 39288-135
(6/20/2006)
1.50 ACRES

ROBERT TR. & DONNA
M. HAMILTON
BK. 27909-40 (10/27/02)
1.353 ACRES

EAST QUABBIN LAND
TRUST, INC.
BK. 51902-233 (12/30/13)
15.7 ACRES

17.329 ACRES

174.76'

URSULA M. ROSEN IRREVOCABLE TRUST
(1/27/06)
BK. 38287-371
(PORTION OF 42.34 ACRES)

WARE RIVER

2430'±

1665'±

198.00'
132.00'
99.00'
175.43'
192.2'

874.5'