

DIVISION OF FISHERIES & WILDLIFE
Bk. 14618-167 (10/16/92)
125.4 ± ACRES

83

COMMONWEALTH OF MASSACHUSETTS
(DEPARTMENT OF FISH & GAME)
Bk. 36585-352 (6/17/2005)
172.165 ACRES

(SEE PL. BK. 826 PL. 124)

KENNETH J. & JILL STOLGITTIS
Bk. 18271-272 (9/25/96)
72.361 ACRES

STANLEY D. T. WHITE
Bk. 17835-260 (4/18/96)
138.00 ACRES
(PART OF MAP 41 LOT 3)

STANLEY D. T. WHITE
Bk. 17835-260 (4/18/96)
138.00 ACRES
(PART OF MAP 41 LOT 3)

STANLEY D. T. & ABBIE M. C. WHITE
Bk. 12142-13 (6/7/89)
2.02 ACRES

STANLEY D. T. WHITE
Bk. 17835-260 (4/18/96)
138.00 ACRES
(PART OF MAP 41 LOT 3)

STANLEY D. T. & ABBIE M. C. WHITE
Bk. 21570-304 (6/30/99)
26.53 ACRES

STANLEY D. T. WHITE
Bk. 17835-257 (4/18/96)
2.104 ± ACRES

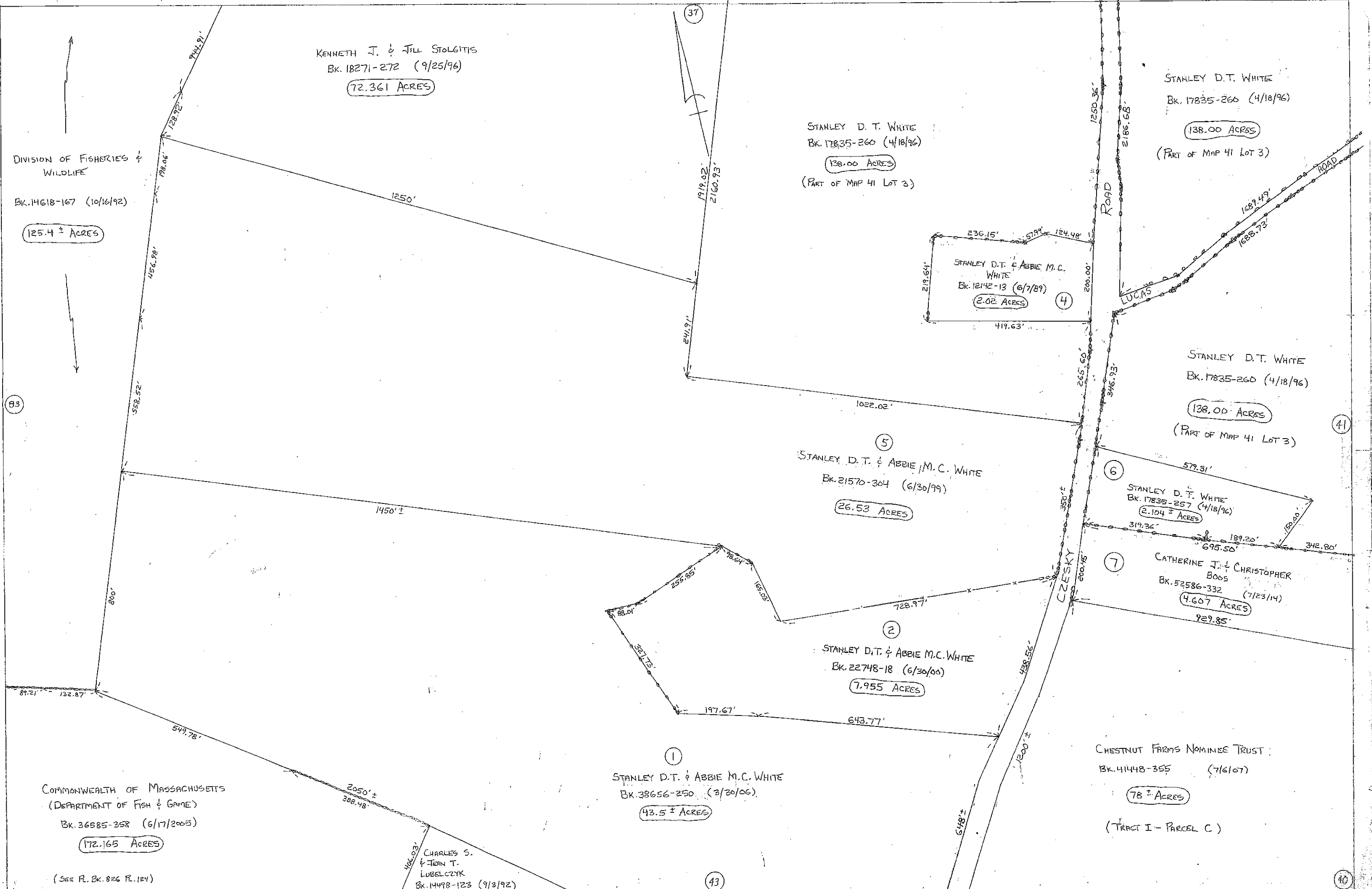
STANLEY D. T. & ABBIE M. C. WHITE
Bk. 22748-18 (6/30/00)
7.955 ACRES

CATHERINE J. & CHRISTOPHER BOGGS
Bk. 52586-332 (7/23/14)
4.607 ACRES

STANLEY D. T. & ABBIE M. C. WHITE
Bk. 38656-250 (3/30/06)
43.5 ± ACRES

CHESTNUT FARMS NOMINEE TRUST
Bk. 41448-355 (7/6/07)
78 ± ACRES
(TRACT I - PARCEL C)

CHARLES S. & JEAN T. LUBELCZYK
Bk. 14498-123 (9/3/92)



43

40