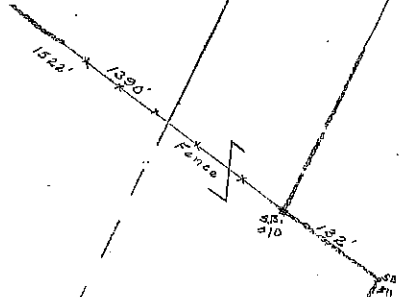


Met. Dist. Comm.
Bk 2771 Pg 104 1940
102.6 Acres (Hardwick)

2



Met. Dist. Comm.
1181
1885



PETERSHAM
(DANA)
HARDWICK

Met. Dist. Comm.
2220
1885

6

STEPHEN C.
BROWN
Bk. 10709-258
(8/18/87)

STEPHEN C.
BROWN
Bk. 10709-258
(8/13/87)

1

Hardwick Rod & Gun Club
B4554 P199
1965
50 Acres

MELLON

Met. Dist. Comm.

8