

BELLOWS RIDGE
810'

CHARLES D. ALLEN
BK. 27596-159
(9/26/02)
(2.5 ACRES)
219.47'

ROBERT W. KEELIPS III
BK. 54714-353 (12/18/15)
(59.47 ACRES)
516'

FREDERICK A. LOTUFF
BK. 26315-68 (4/03/02)
(24.6 ACRES)
(TRACT I)

②
FREDERICK A. LOTUFF
BK. 26315-68 (4/03/02)
(63.55 ACRES)
(TRACT III)

REVOCABLE
INDENTURE OF
TRUST OF CHARLES
M. ALLEN
BK. 42575-302
(3/19/08)
13.5 ± ACRES

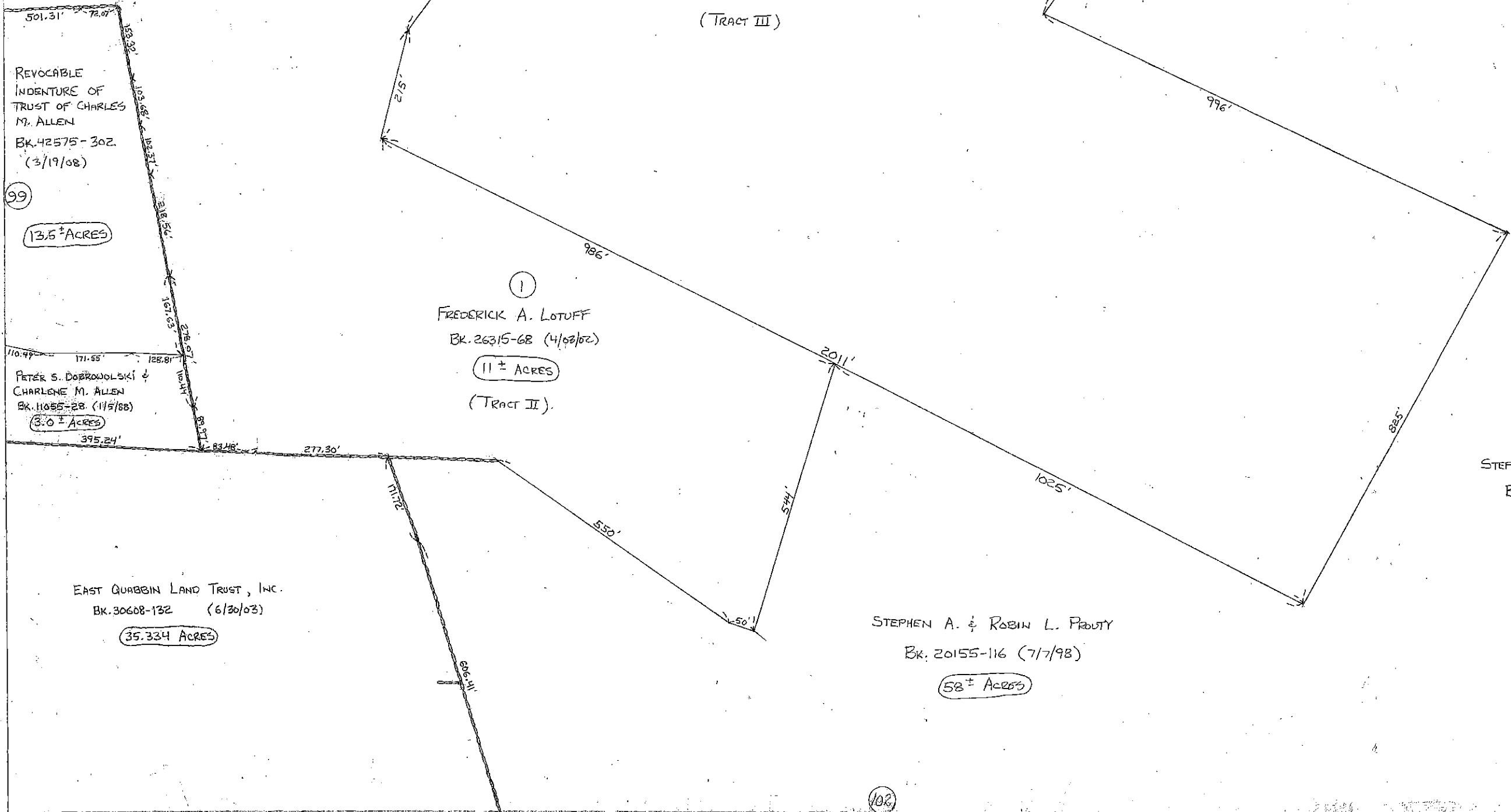
①
FREDERICK A. LOTUFF
BK. 26315-68 (4/03/02)
(11 ± ACRES)
(TRACT II)

PETER S. DOBROWOLSKI &
CHARLENE M. ALLEN
BK. 11055-28 (11/9/08)
(3.0 ± ACRES)

EAST QUABBIN LAND TRUST, INC.
BK. 30608-132 (6/30/03)
(35.334 ACRES)

STEPHEN A. & ROBIN L. PROUTY
BK. 20155-116 (7/7/98)
(58 ± ACRES)

STEPHEN A. & ROBIN L. PROUTY
BK. 20155-116 (7/7/98)
(58 ± ACRES)



98

99

116

102

100