

EAST QUABBIN  
LAND TRUST, INC.  
(BK. 30608-132)

⑤  
EDWARD J. & JULIA S. LUBELCZYK  
BK. 7059-151 (9/15/80)  
83.70 ACRES

④  
COMMONWEALTH OF MASSACHUSETTS  
(DEPT. OF FISHERIES & WILDLIFE)  
BK. 22738-181 (6/29/00)  
45.36 ACRES

⑥  
ROBERT W. SHELTERS  
BK. 60512-113 (6/6/19)  
1.504 ACRES

③ (SEE R. 751-60)  
DONALD W. & PAULA ROBERTS  
BK. 22261-180 (1/26/00)  
1.84 ACRES

⑦  
DANIEL E. & SHARON HANSON  
BK. 47090-161 (2/15/11)  
PORTION OF 48.2 ACRES

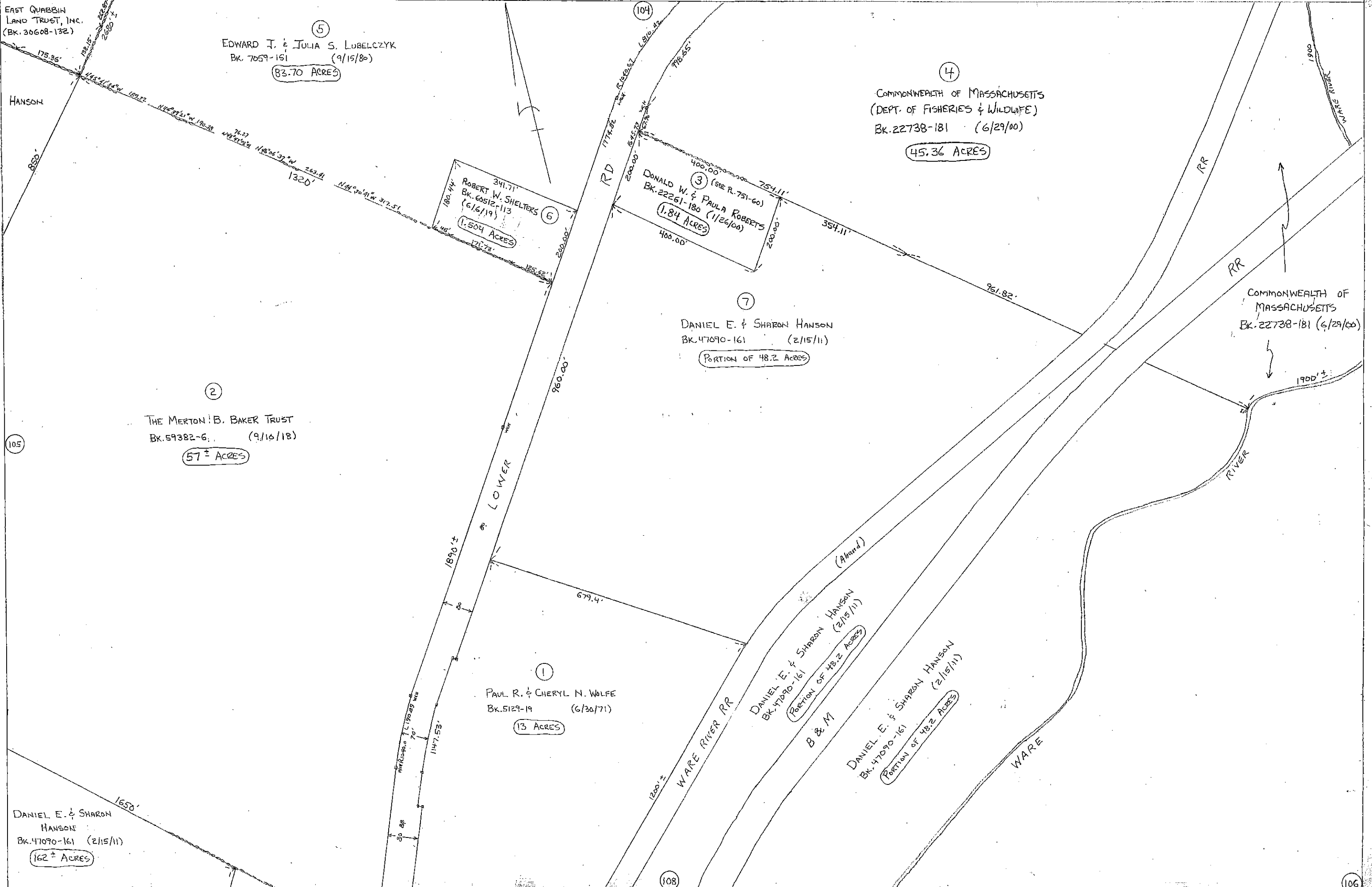
②  
THE MERTON B. BAKER TRUST  
BK. 59382-6 (9/16/18)  
57 ± ACRES

①  
PAUL R. & CHERYL N. WOLFE  
BK. 5129-19 (6/30/71)  
13 ACRES

(A hand)  
DANIEL E. & SHARON HANSON  
BK. 47090-161 (2/15/11)  
PORTION OF 48.2 ACRES  
B & M

DANIEL E. & SHARON HANSON  
BK. 47090-161 (2/15/11)  
PORTION OF 48.2 ACRES

DANIEL E. & SHARON  
HANSON  
BK. 47090-161 (2/15/11)  
162 ± ACRES



105

104

108

106