

JACKSON GREEN LLC
Bk. 56452-232 (12/13/16)
27.449 ACRES
(SEE P. BK. 468 P. 98)

(127)
BARRE

(14)
JAMES M. & WILLIAM J. STELMOKAS
Bk. 22438-16 (3/29/2000)
6000 S.F.

WELSCH REALTY TRUST
Bk. 22993-104 (9/13/2000)
5.458 ACRES

JACHEN & MARY ANN WELSCH
Bk. 15793-102 (11/23/93)
5.182 ACRES

CHESTER BORDNSKI & MELINDA R. WEISS-BORDNSKI
Bk. 12914-101 (7/27/90)
5.141 ACRES

(4)
D. & J.C. WARBURTON
Bk. 11965-128 (3/7/89)
7.911 ACRES

(11)
WILLIAMS FAMILY TRUST
Bk. 60894-68 (8/16/19)
8.281 ACRES

(12)
THOMAS T. & DEBORAH A. NEWTON
Bk. 54894-318 (2/1/16)
4.92 ACRES

(13)
THOMAS J. & LISA A. NEWELL
Bk. 14350-217 (7/2/92)
2.735 ACRES

(5)
THEODORE, JR. & SUSAN C. THAROG
Bk. 6205-324 (6/14/77)
4.1 ACRES

(10)
BETH CAFARELLA
Bk. 16448-12 (7/20/94)
2.39 ACRES

(9)
MICHAEL J. & CHERYL L. GREENE
Bk. 51724-189 (11/08/13)
3.303 ACRES

(8)
MICHAEL J. & CHERYL L. GREENE
Bk. 51724-189 (11/08/13)
4.374 ACRES

(7)
THE DK TRUST
Bk. 41758-322 (9/5/87)
14.16 ACRES

(6)
HOWARD DAVIS GODDARD, ET. AL.
Bk. 23320-216 (12/12/00)
7.006 ACRES

MILTON MCCRUM
Bk. 55757-172 (8/5/16)
11.42 ACRES

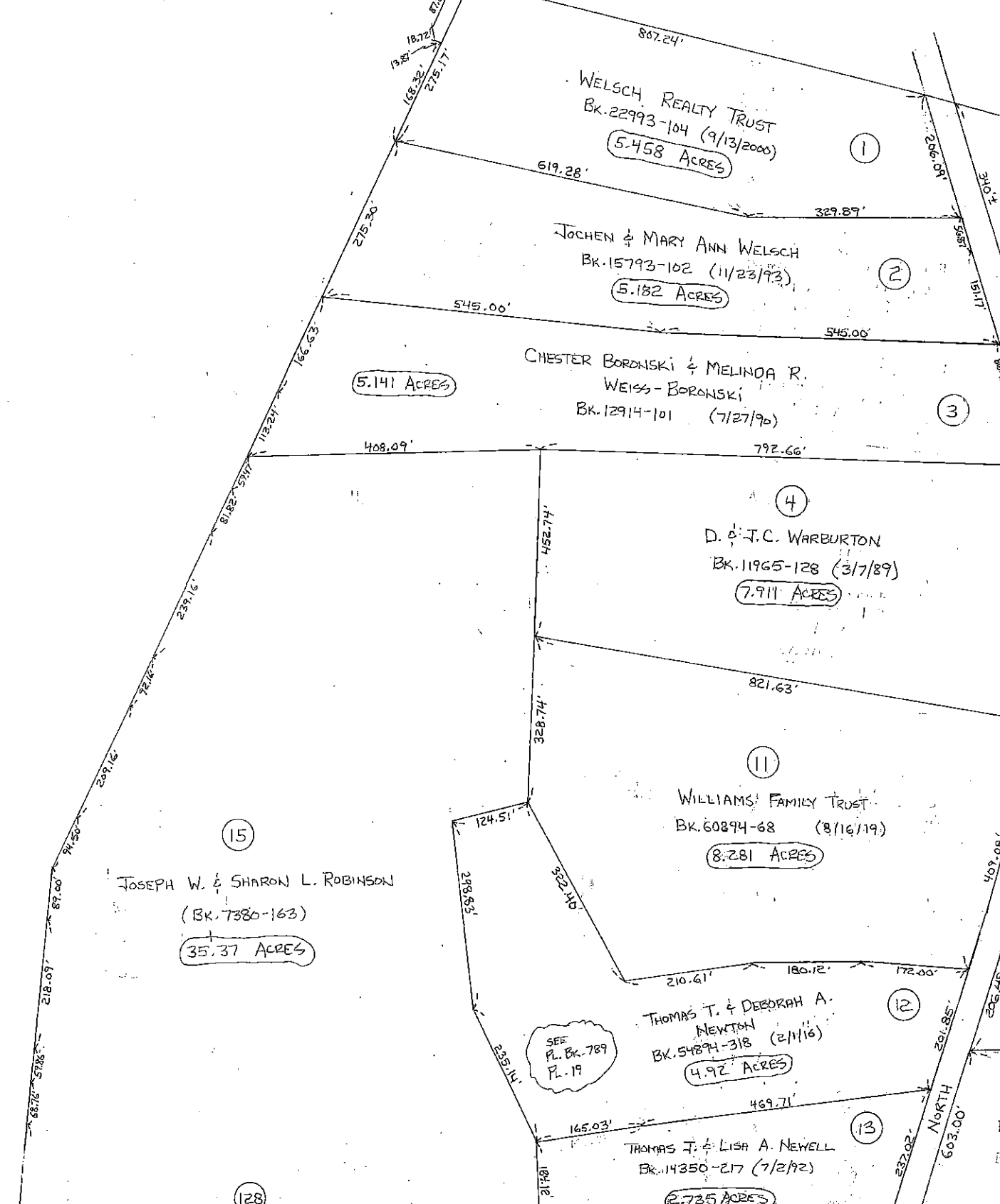
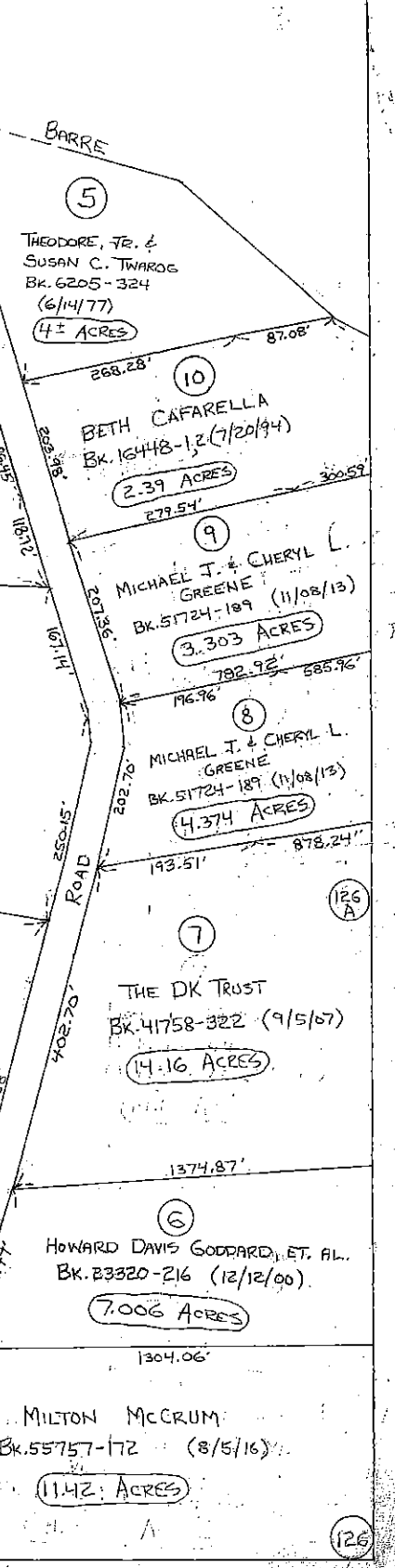
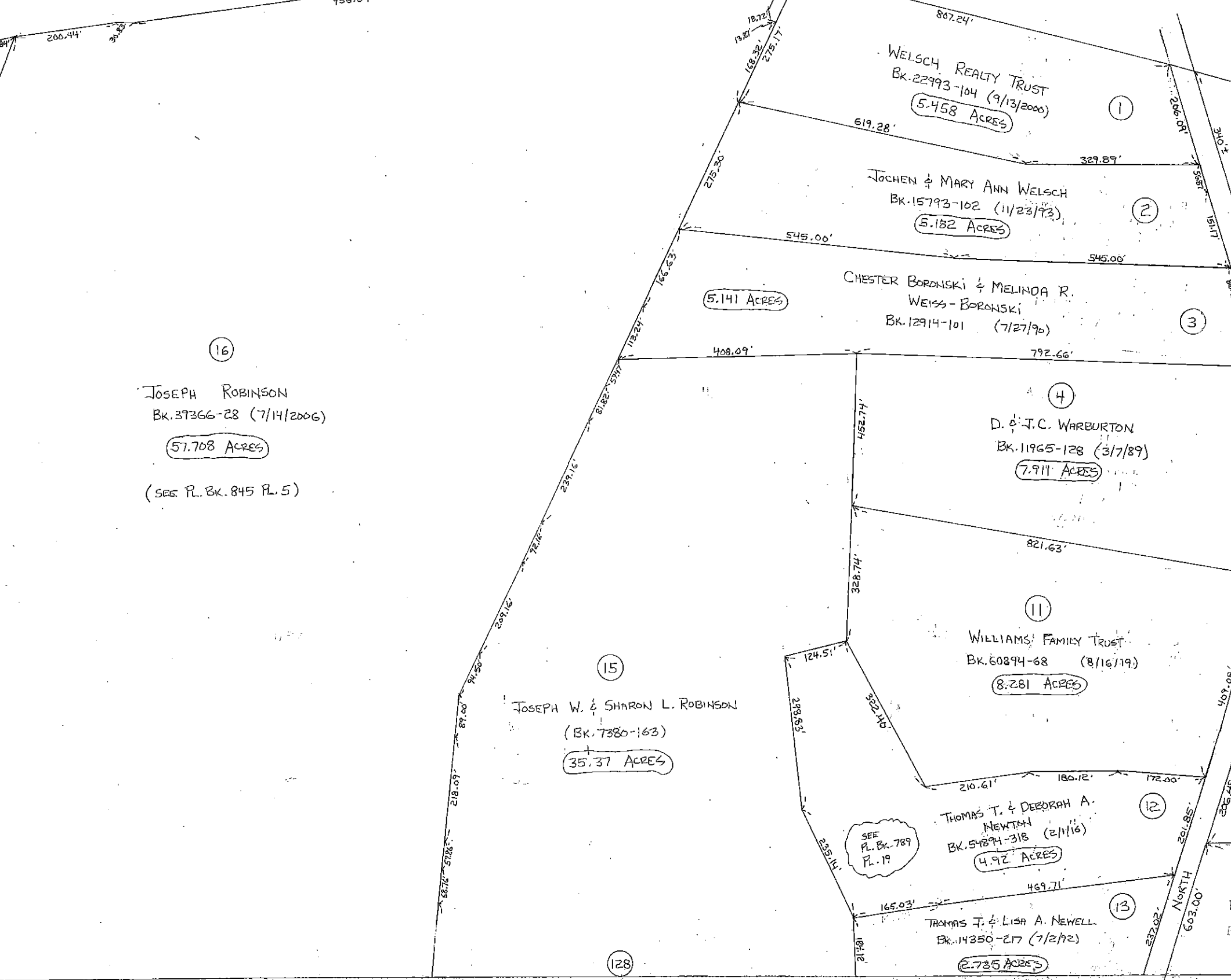
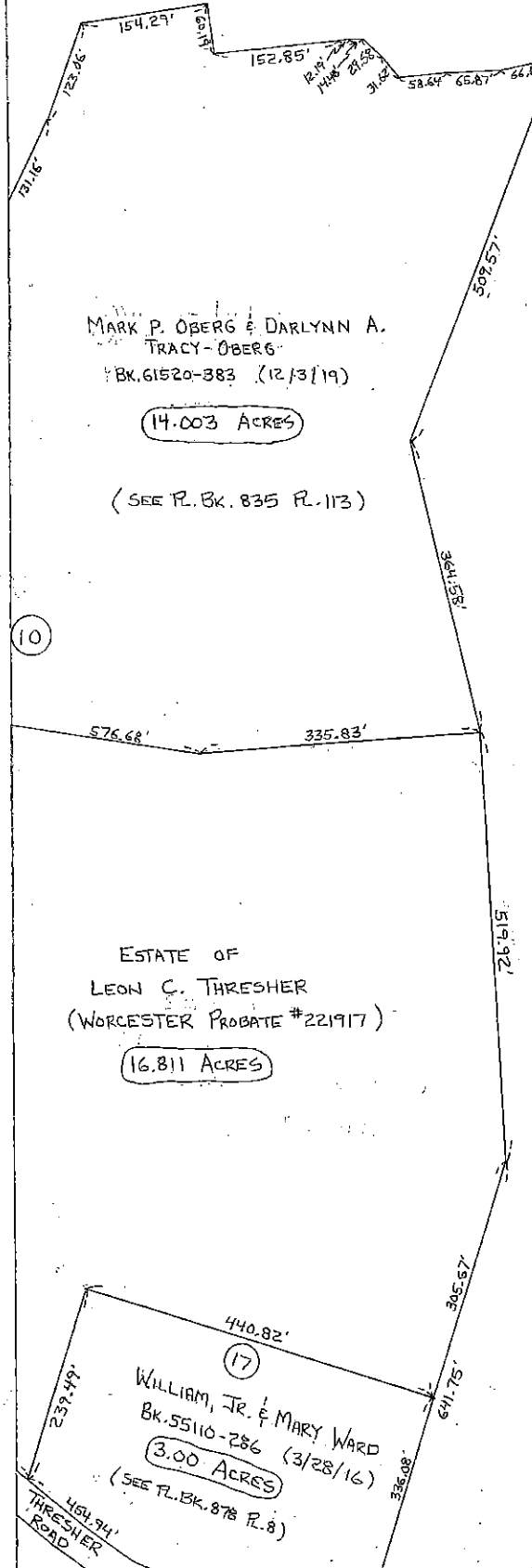
MARK P. OBERG & DARLYNN A. TRACY-OBERG
Bk. 61520-383 (12/3/19)
14.003 ACRES
(SEE P. BK. 835 P. 113)

(16)
JOSEPH ROBINSON
Bk. 39366-28 (7/14/2006)
57.708 ACRES
(SEE P. BK. 845 P. 5)

ESTATE OF LEON C. THRESHER
(WORCESTER PROBATE #221917)
16.811 ACRES

(15)
JOSEPH W. & SHARON L. ROBINSON
(Bk. 7380-163)
35.37 ACRES

(17)
WILLIAM, JR. & MARY WARD
Bk. 55110-286 (3/28/16)
3.00 ACRES
(SEE P. BK. 878 P. 8)



THRESHER ROAD

NORTH ROAD

ROAD

BARRE

BARRE

BARRE

(126)

(126 A)

(128)