

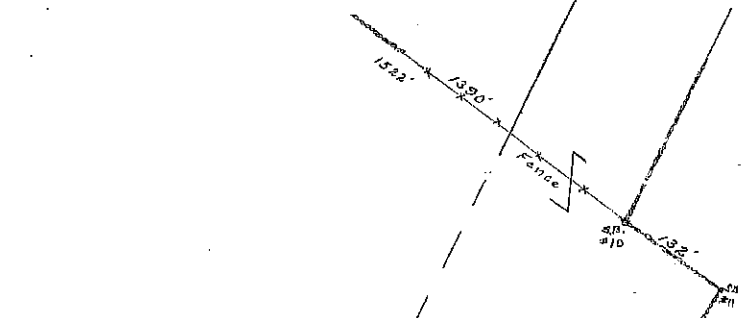
Met. Dist. Comm.
Bk 2771 Pg 104 1940
162.6 Acres (Hardwick)

2



Met. Dist. Comm.
1/8/1885

PETERSHAM
(DANA)
HARDWICK



N 24° 20' 54" E
0
5,227.83
Met. Dist. Comm.
22/20/
1885

6

STEPHEN C.
BROWN
Bk. 10709-258
(8/13/87)

STEPHEN C.
BROWN
Bk. 10709-258
(8/13/87)

RD

1

Hardwick Rod & Gun Club
B 4554 P 199
1965
50 Acres

MELLON

Met. Dist. Comm.

8

5