

Met. Dist. Comm.

NEW ENGLAND FORESTRY FOUNDATION, INC.

3661.66'

7

NEW ENGLAND FORESTRY FOUNDATION, INC.
BK. 41464-248 (7/10/57)

106 ± ACRES

Met. Dist. Comm.

72A

996.00'

Met. Dist. Comm.

Met. Dist. Comm.

Road To Gate #44

Met. Dist. Comm.

ROAD

GREENWICH

1

DILLON M. GALICA
BK. 61253-396 (10/18/19)
5.059 ± ACRES

2

DAVID S. AUCOIN
BK. 19526-1 (1/16/98)
5.054 ACRES

3

ROBIN A. & WALTER S. BOBOWIEC, JR.
BK. 45349-26 (12/15/06)
5.002 ACRES

4

JOHN J. O'BRIEN, JR.
BK. 43280-192 (9/05/08)
38.245 ACRES

(SEE P.L. BK. 475 P.L. 74)

5

KAREN ELLEN SHOEMAKER
BK. 12692-353 (3/26/90)
34.039 ± ACRES

FREDERICK H. BROWN
BK. 20676-374 (11/18/98)

72.74 ACRES

6

NEW ENGLAND FORESTRY FOUNDATION, INC.
BK. 59878-235 (12/28/18)

24 ± ACRES

73

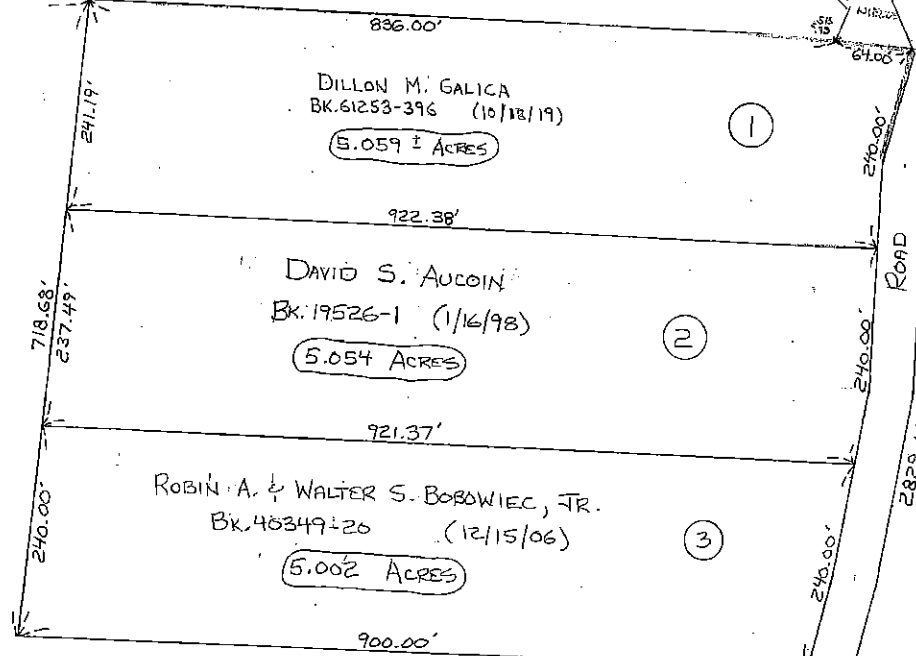
3360'

NEW ENGLAND FORESTRY FOUNDATION, INC.
BK. 9128-279 ()

180 ± ACRES

74

76



ROAD

GREENWICH

1432.15'

1935.32'
797.2'