

BANCROFT FAMILY TRUST
BK. 49927-219 (11/08/12)

23.25 ACRES

BANCROFT FAMILY TRUST
BK. 49927-219 (11/08/12)

8.34 ACRES

CHRISTOPHER & DANIELLE LANCE
BK. 60485-272 (5/31/19)

57.3 ACRES

RAUL OCTAVIANI, CANDICE SOUSA, & CINDY S. KWATEWSKI
BK. 56099-308 (10/7/16)

6.00 ACRES

RAUL OCTAVIANI, CANDICE SOUSA, & CINDY S. KWATEWSKI
BK. 56099-308 (10/7/16)

6.00 ACRES

ROACH ENTERPRISES, LLC
BK. 29276-200 (3/10/03)

35± ACRES

BANCROFT FAMILY TRUST
BK. 49927-219 (11/08/12)

18.613 ACRES

FRANK L. LABIER
BK. 21080-45 (2/24/99)

PART OF 72.364 ACRES

BANCROFT FAMILY TRUST
BK. 49927-219 (11/08/12)

24.026 ACRES

BRANDON GIRARD
BK. 44684-247 (8/04/09)

14.853 ACRES

(SEE P.L. BK. 731 P.L. 102)

DAVID T. & LEAH O. LARSON
BK. 56969-347 (4/12/17)

23.204 ACRES

(SEE P.L. BK. 731 P.L. 102)

WILLIAM C. DUPELL, III & TANYA M. GRYSZOWKA-DUPELL
BK. 54452-210 (10/20/15)

4.00 ACRES

DAVID T. & LEAH O. LARSON
BK. 56969-347 (4/12/17)

23.204 ACRES

HENRY C. KOHN, JR.
BK. 10631-144 (6/25/87)

8.632 ACRES

CHRISTOPHER L. ELDRIDGE
BK. 38743-264 (4/11/06)

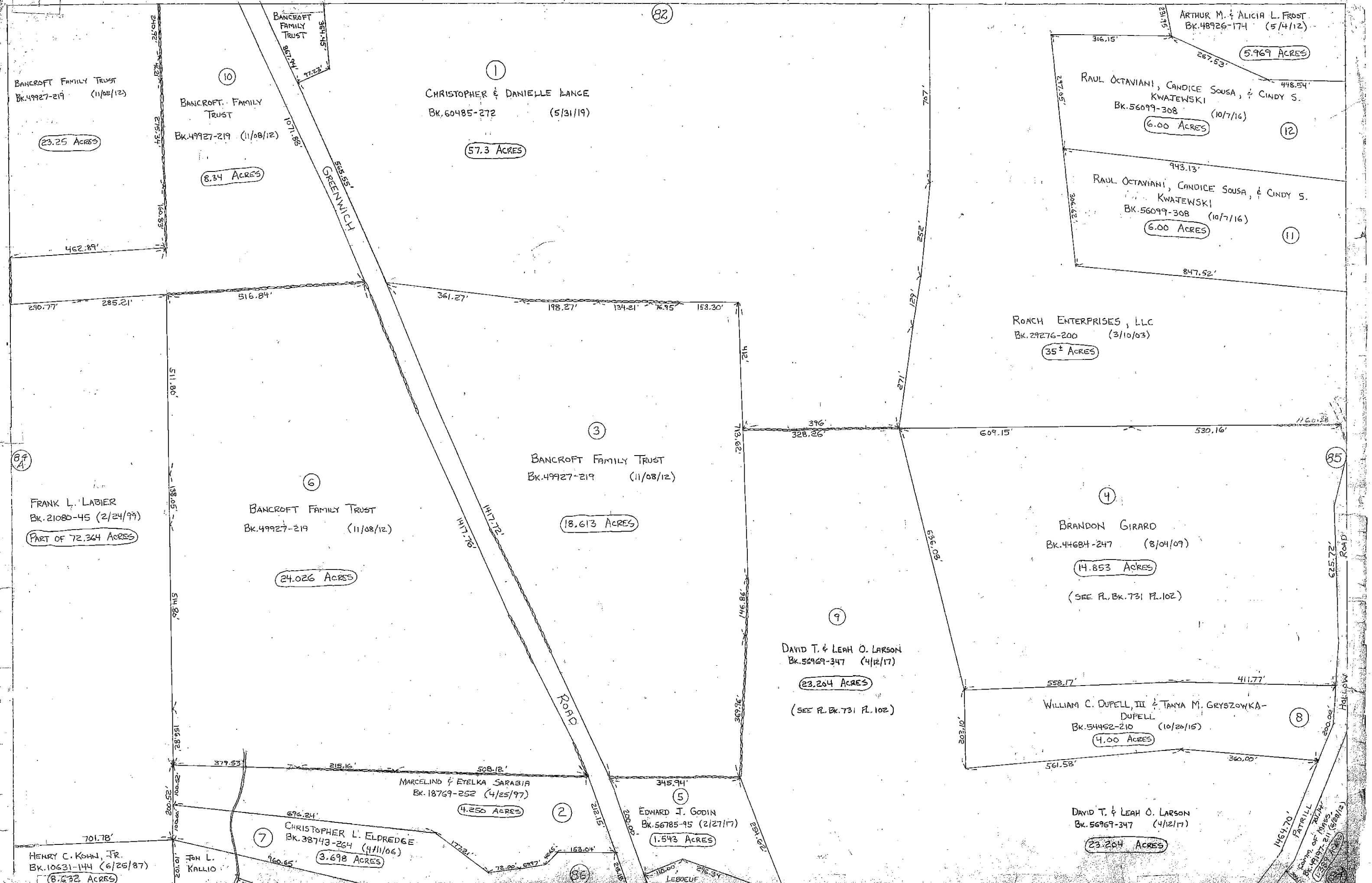
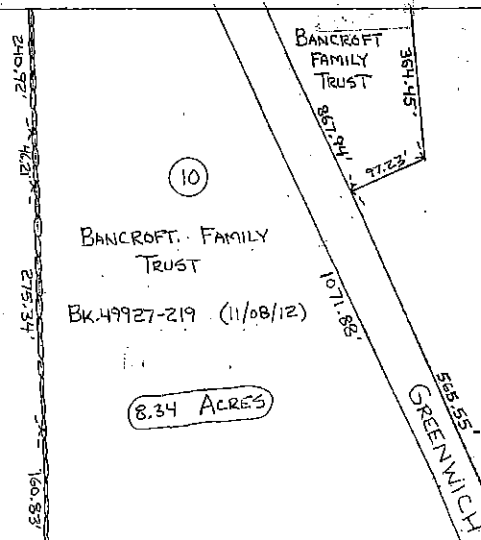
3.698 ACRES

EDWARD J. GODIN
BK. 56785-95 (2/27/17)

1.543 ACRES

MARCELINO & ETELKA SARABIA
BK. 18769-252 (4/25/97)

4.250 ACRES



82

10

1

5.969 ACRES

12

11

87 A

6

3

4

9

8

7

2

5

86

85

87 B

87 C

87 D

87 E