

COMMONWEALTH OF MASSACHUSETTS  
(DEPARTMENT OF FISH AND GAME)  
Bk. 47547-365 (6/30/11)

15.00 ACRES

COMMONWEALTH OF MASSACHUSETTS  
(DEPARTMENT OF FISHERIES & WILDLIFE)  
Bk. 17119-123 (5/25/95)

62.5 ± ACRES

COMMONWEALTH OF MASSACHUSETTS  
(DEPARTMENT OF FISH & GAME)  
Bk. 36585-358 (6/17/2005)

172.165 ACRES

(SEE P.L. BK. 826 P.L. 124)

TOWN OF WARE  
Bk. 2689-162 (2/16/37)

3.6 ± ACRES

COMMONWEALTH OF MASSACHUSETTS  
Bk. 36485-29 (6/3/2005)

JOHN SAMEK  
Bk. 51049-169 (6/17/2013)

15 ± ACRES

FILLY  
GRACE F. BACON  
(SEE Bk. 2569-321)

COMMONWEALTH OF MASSACHUSETTS  
(DEPT. OF FISH & GAME)  
Bk. 55036-158 (3/9/16)

82.6 ± ACRES

COMMONWEALTH OF MASSACHUSETTS  
Bk. 36485-29 (6/3/2005)

104.75 ACRES

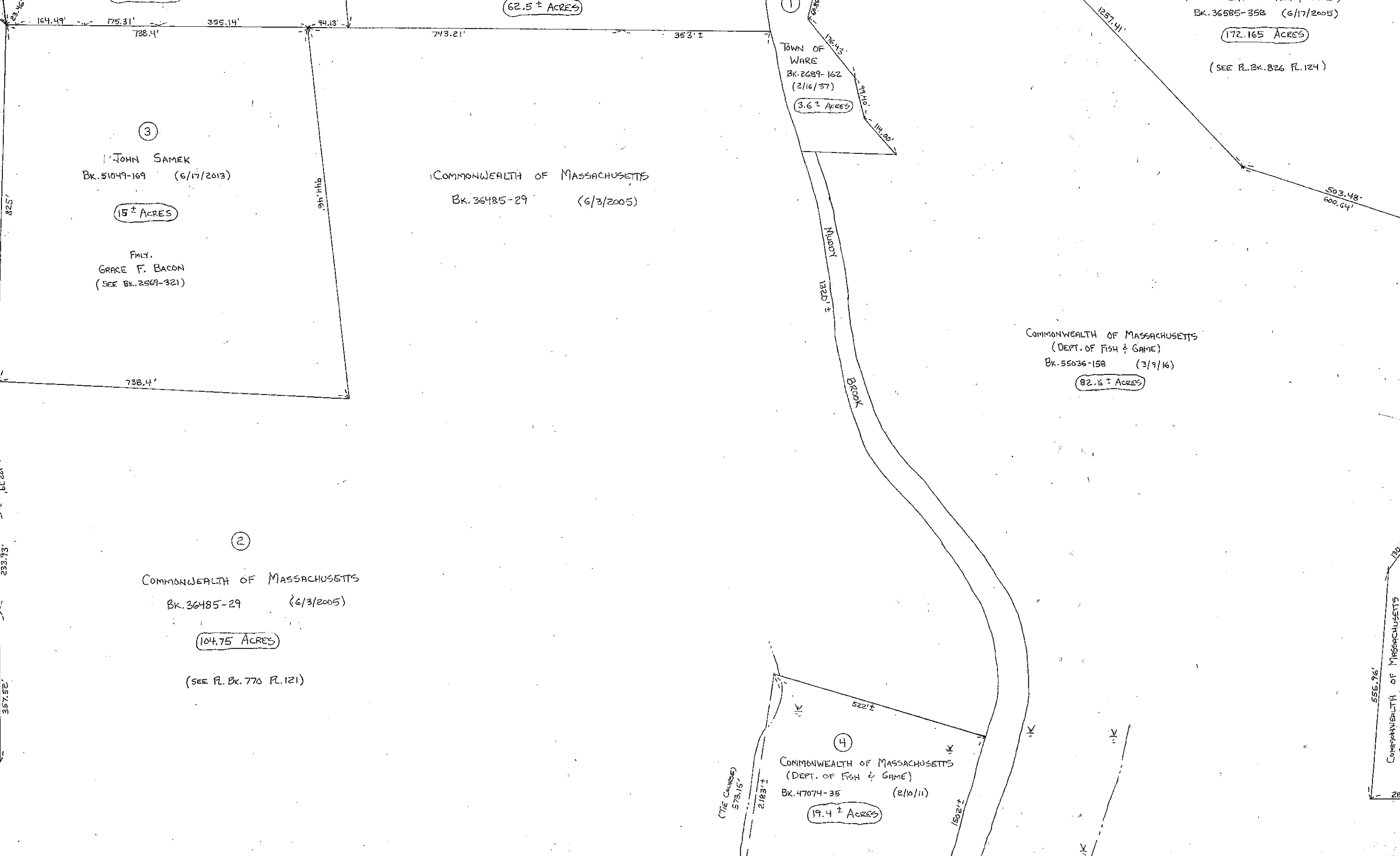
(SEE P.L. BK. 770 P.L. 121)

COMMONWEALTH OF MASSACHUSETTS  
(DEPT. OF FISH & GAME)  
Bk. 47074-35 (2/10/11)

19.4 ± ACRES

COMMONWEALTH OF MASSACHUSETTS  
Bk. 55036-158 (3/9/16)

8.388 ACRES



63.295 ACRES

JOHN I. SAMEK Bk. 49297-95 (7/18/12)

188.25'

85

86

86

89

87