

Met. Dist. Comm.

70

1795.45'

COMMONWEALTH OF MASSACHUSETTS
BK. 7093-198 (8/22/80)

46.50 ACRES

(SEE P. BK. 456 P. 67)

Met. Dist Comm.

71A

480
Gate
#13

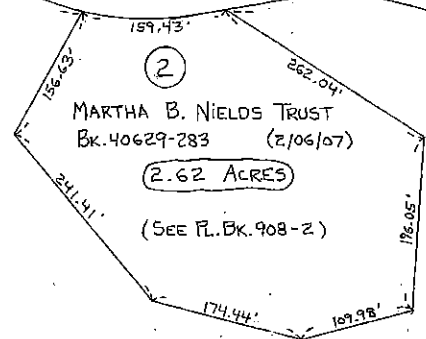
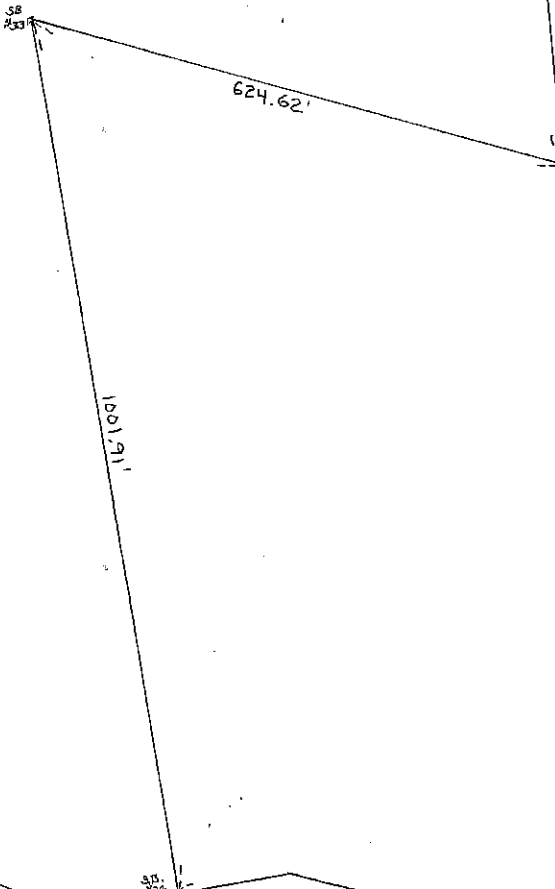
GREENWICH
2880'±

COMMONWEALTH OF MASSACHUSETTS
BK. 7093-198 (8/22/80)

205.04 ACRES

NEW ENGLAND FORESTRY FOUNDATION, INC.
BK. 52495-109 (6/30/14)

85.78 ACRES



MARTHA B. NIELDS TRUST
BK. 40629-283 (7/06/07)

2.62 ACRES

(SEE P. BK. 908-2)

NEW ENGLAND FORESTRY FOUNDATION,
INC.
BK. 52495-109 (6/30/14)

85.78 ACRES

2240'±
Road

MELLON

RD

20

73

71