

1A BERNARD & CYNTHIA A. DUMAS
Bk. 24685-302 (9/27/2004)
2.012 ACRES

2 RONALD A. & MONICA E. LARSON
Bk. 18414-32 (11/20/96)
3.26 ACRES

3 KEVIN M. & TRACIE K. SHEA
Bk. 27729-184 (10/7/02)
3.00 ACRES

4 NICKSON - BLAKE
B. 10245 049
MAY 1987
1.274 - 3 AC - J
3.0 ACRES

5 SHELDON A. & SARAH A. HARDING
Bk. 16654-116 (10/21/94)
3.00 ACRES

6 THOMAS M. & KRISTINE E. DOUGAN
Bk. 17365-344 (10/3/95)
3.058 ACRES

7 THOMAS M. & KRISTINE M. DOUGAN
Bk. 43546-359 (11/26/08)
Bk. 23887-388 (4/24/01)
4.368 ACRES

8 TOD F. & CRISTY L. BERTINI
Bk. 35840-54 (3/7/2005)
3.155 ACRES

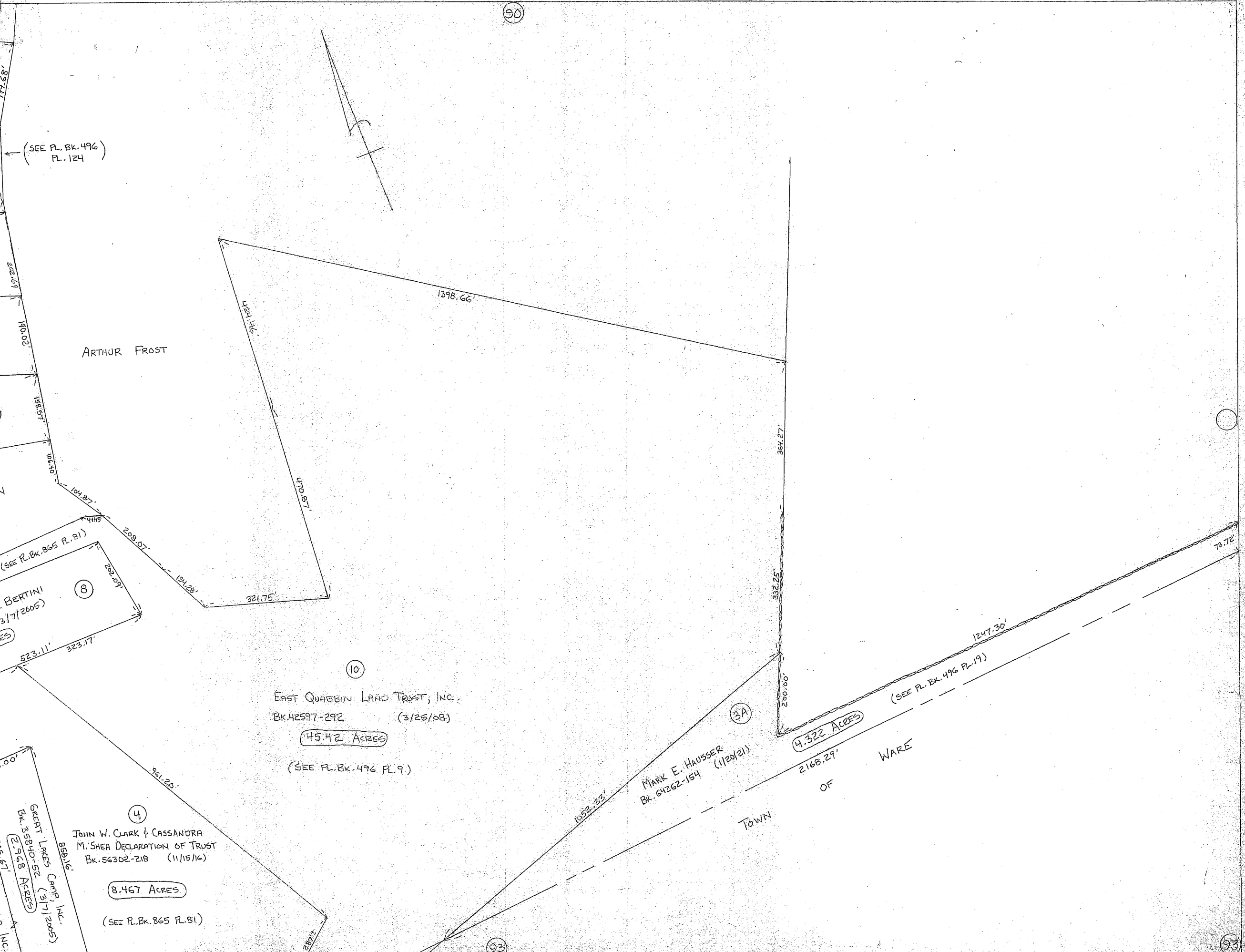
9 GREAT LAKES CAMP, INC.
Bk. 22431-98 (3/27/00)
51.222 ACRES

10 EAST QUABBIN LAND TRUST, INC.
Bk. 42597-292 (3/25/88)
45.42 ACRES
(SEE PL. BK. 496 PL. 9)

11 JOHN W. CLARK & CASSANDRA M. SHEA DECLARATION OF TRUST
Bk. 56302-218 (11/15/16)
8.467 ACRES
(SEE R. BK. 865 PL. 81)

12 GREAT LAKES CAMP, INC.
Bk. 35840-52 (3/7/2005)
2.968 ACRES

13 GREAT LAKES CAMP, INC.
Bk. 22431-98 (3/27/00)
3.113 ACRES



90

(SEE PL. BK. 496 PL. 124)

ARTHUR FROST

10

EAST QUABBIN LAND TRUST, INC.
Bk. 42597-292 (3/25/88)

45.42 ACRES
(SEE PL. BK. 496 PL. 9)

4

JOHN W. CLARK & CASSANDRA M. SHEA DECLARATION OF TRUST
Bk. 56302-218 (11/15/16)

8.467 ACRES
(SEE R. BK. 865 PL. 81)

1

GREAT LAKES CAMP, INC.
Bk. 35840-52 (3/7/2005)
2.968 ACRES

13

GREAT LAKES CAMP, INC.
Bk. 22431-98 (3/27/00)
3.113 ACRES

3A

MARK E. HAUSSER
Bk. 64262-154 (1/20/21)

4.322 ACRES
(SEE PL. BK. 496 PL. 19)

TOWN OF WARE

93

93