

48

JEFFERY & HEATHER SMITH  
Bk. 53642-163 (4/28/15)  
45 ± ACRES

JEFFERY & HEATHER SMITH  
Bk. 53641-24 (4/27/15)  
8.2 ± ACRES

WILLIAM TINKER  
Bk. 49827-288 (10/23/12)  
13.11 ACRES

RUSSELL L. & DANIELLE M. SANDERSON  
GEORGE W. & BARBARA M. HANSON  
Bk. 6251-379 (8/1/77)  
2.527 ACRES  
(SEE PL. Bk. 440-103)

FREDERICK V. FITAL  
Bk. 10117-246 (12/27/86)  
3.777 ACRES

MARK, RICHARD & DANIAL SALVUCCI  
Bk. 54476-311 (10/23/15)  
1.55 ACRES

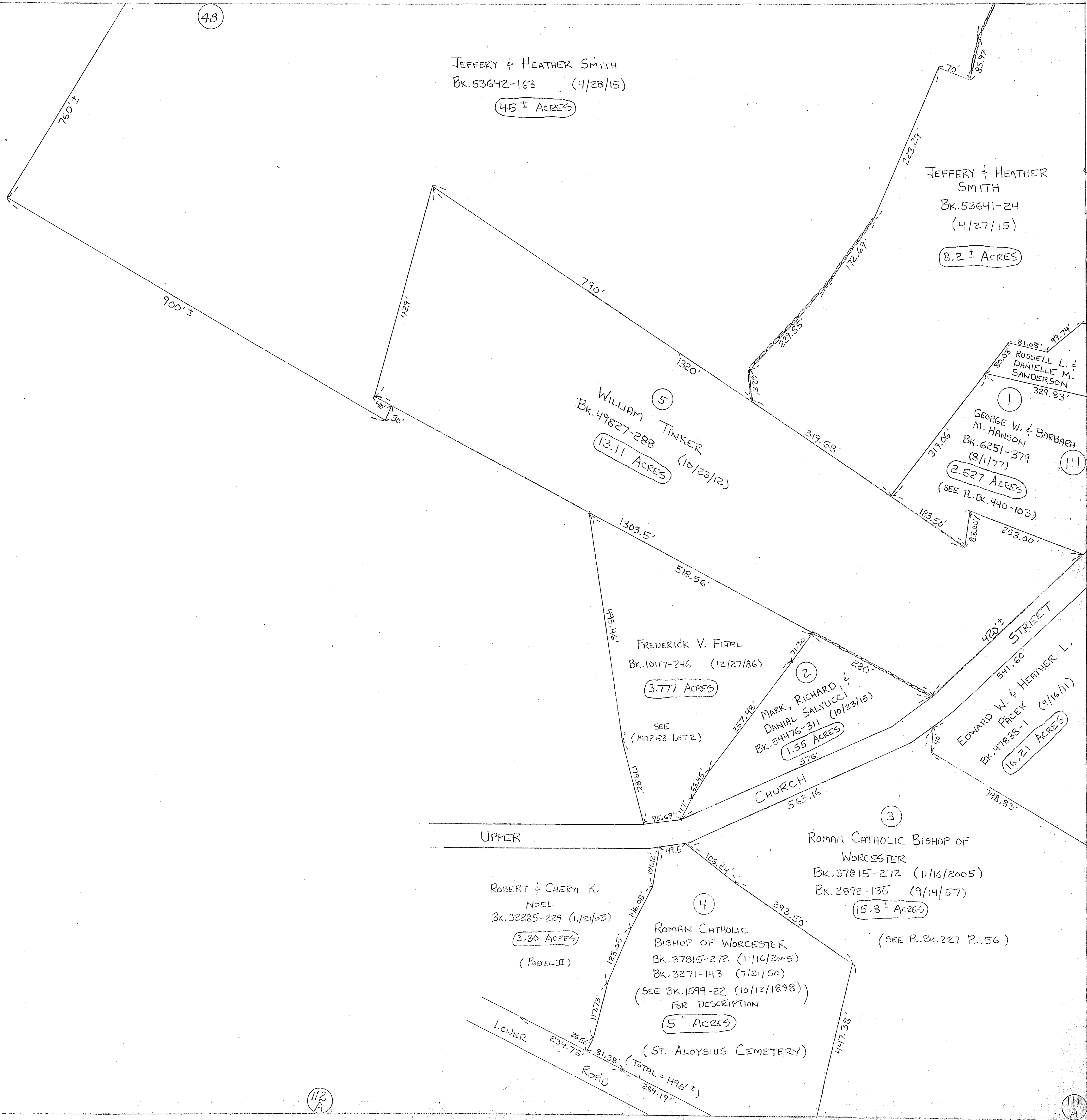
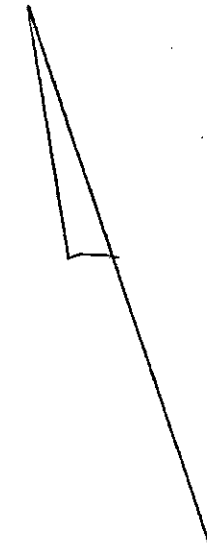
EDWARD W. & HEATHER L. PACEK  
Bk. 47828-1 (9/16/11)  
16.21 ACRES

ROMAN CATHOLIC BISHOP OF WORCESTER  
Bk. 37815-272 (11/16/2005)  
Bk. 3892-135 (9/14/57)  
15.8 ± ACRES  
(SEE PL. Bk. 227 PL. 56)

ROBERT & CHERYL K. NOEL  
Bk. 32285-229 (11/21/03)  
3.30 ACRES  
(PARCEL II)

ROMAN CATHOLIC BISHOP OF WORCESTER  
Bk. 37815-272 (11/16/2005)  
Bk. 3271-143 (7/21/50)  
FOR DESCRIPTION  
5 ± ACRES  
(ST. ALOYSIUS CEMETERY)

UPPER LOWER ROAD  
TOTAL = 496 ±



112 A

111 A