

JACKSON GREEN LLC
Bk. 56452-232 (12/13/16)

27.449 ACRES

(SEE PL. BK. 468 PL. 98)

127

BARRE

14

JAMES M. & WILLIAM J. STELMOKAS
Bk. 22438-16 (3/29/2000)
5000 S.F.

WELSCH REALTY TRUST
Bk. 22993-104 (9/13/2000)
5.458 ACRES

JOCHEN & MARY ANN WELSCH
Bk. 15793-102 (11/23/93)
5.182 ACRES

CHESTER BORONSKI & MELINDA R. WEISS-BORONSKI
Bk. 12914-101 (7/27/90)
5.141 ACRES

CHESTER BORONSKI
Bk. 63024-312 (8/14/20)
7.911 ACRES

WILLIAMS FAMILY TRUST
Bk. 60894-68 (8/16/19)
8.281 ACRES

THOMAS J. & LISA A. NEWELL
Bk. 62554-151 (6/9/20)
4.92 ACRES

THOMAS J. & LISA A. NEWELL
Bk. 14350-217 (7/2/92)
2.735 ACRES

THEODORE, JR. & SUSAN C. TIWROG
Bk. 6205-324 (6/14/77)
4± ACRES

BETH CAFARELLA
Bk. 16448-12 (7/20/94)
2.39 ACRES

MICHAEL J. & CHERYL L. GREENE
Bk. 51724-189 (11/08/13)
3.303 ACRES

MICHAEL J. & CHERYL L. GREENE
Bk. 51724-189 (11/08/13)
4.374 ACRES

THE DK TRUST
Bk. 41758-322 (9/5/67)
14.16 ACRES

HOWARD DAVIS GODDARD, ET. AL.
Bk. 23320-216 (12/12/00)
7.006 ACRES

MILTON MCCRUM
Bk. 55757-172 (8/5/16)
11.42 ACRES

MARK P. OBERG & DARLYNN A. TRACY-OBERG
Bk. 61520-383 (12/3/19)

14.003 ACRES

(SEE PL. BK. 835 PL. 113)

JOSEPH ROBINSON
Bk. 39366-28 (7/14/2006)

57.708 ACRES

(SEE PL. BK. 845 PL. 5)

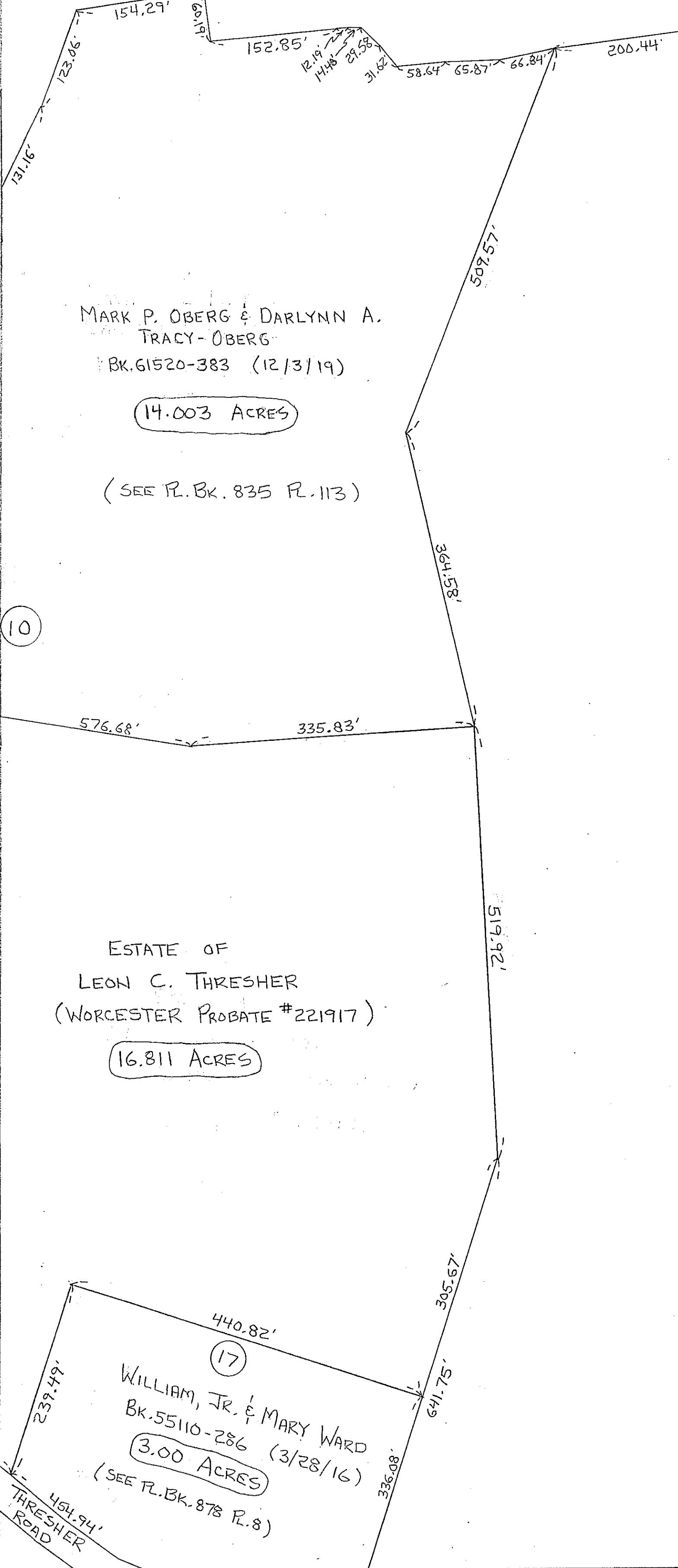
ESTATE OF LEON C. THRESHER
(WORCESTER PROBATE #221917)

16.811 ACRES

WILLIAM, JR. & MARY WARD
Bk. 55110-286 (3/28/16)

3.00 ACRES

(SEE PL. BK. 878 PL. 8)



128

126