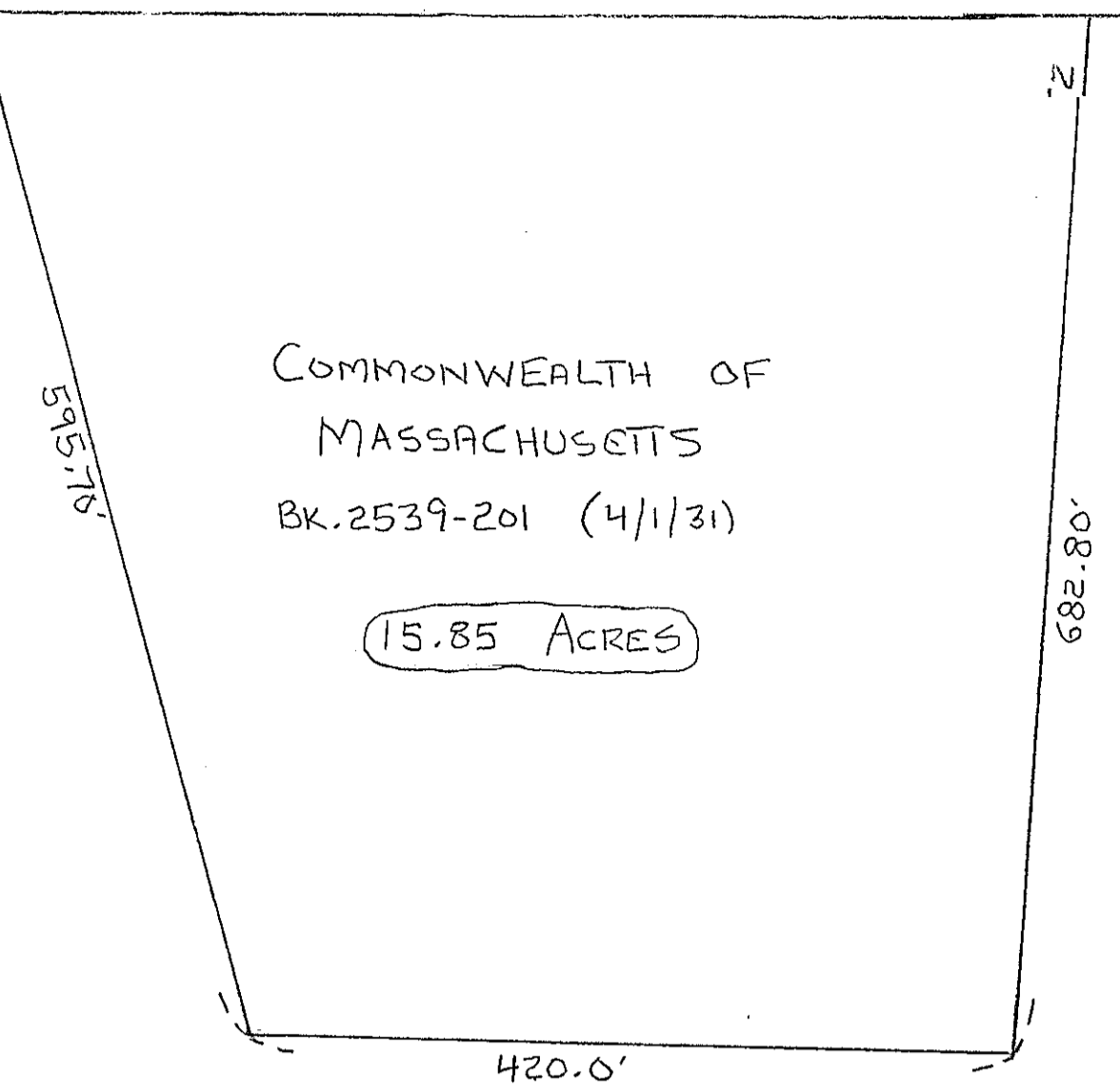


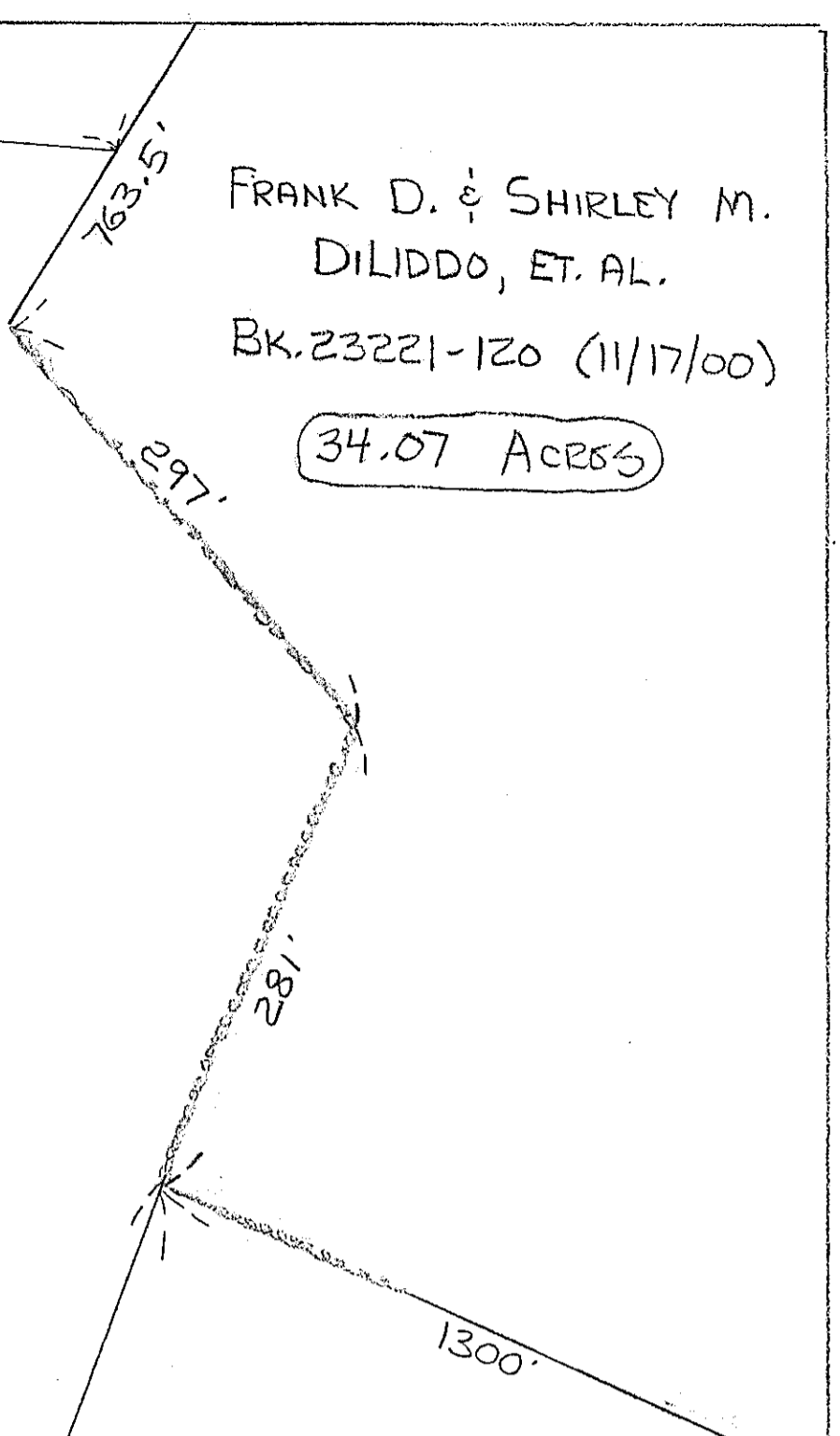
17



COMMONWEALTH OF MASSACHUSETTS  
 BK. 2539-201 (4/1/31)

15.85 ACRES

JAMES P. & ELIZABETH M. STACK  
 208.80' 204.73'



FRANK D. & SHIRLEY M. DILIDDO, ET. AL.  
 BK. 23221-120 (11/17/00)

34.07 ACRES

71

COMMONWEALTH OF MASSACHUSETTS  
 (METROPOLITAN DISTRICT COMMISSION)  
 BK. 7093-198 (8/22/80)

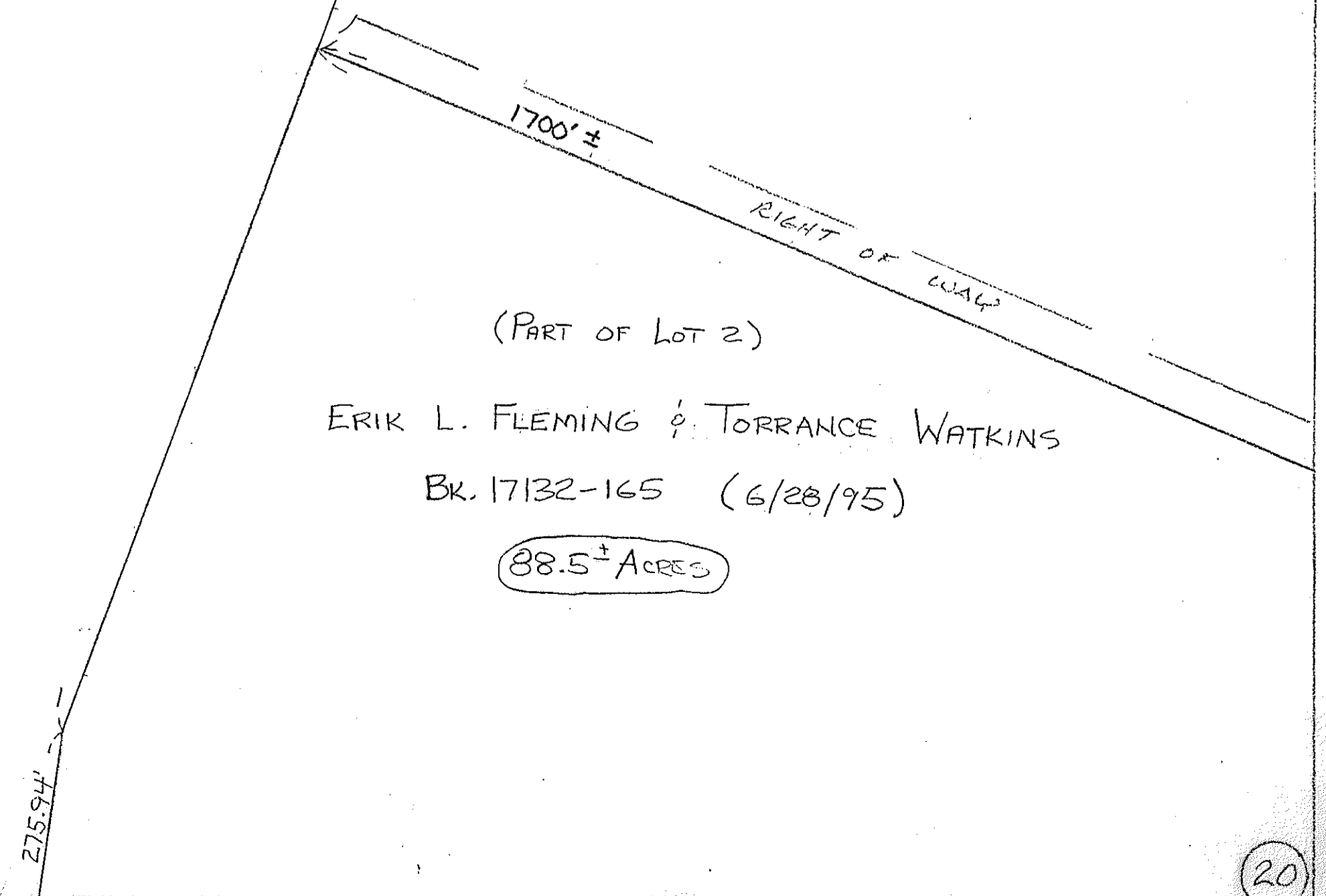
205.04 ACRES

(SEE PL. BK. 456 PL. 67)

PAIGE ROAD TRUST No. 1  
 BK. 44442-197 (6/19/69)

37.75 ACRES

21



(PART OF LOT 2)  
 ERIK L. FLEMING & TORRANCE WATKINS  
 BK. 17132-165 (6/28/95)

88.5± ACRES

23

20