

NEW ENGLAND FORESTRY
FOUNDATION, INC.
BK. 52495-109 (6/30/14)
85.78 ACRES

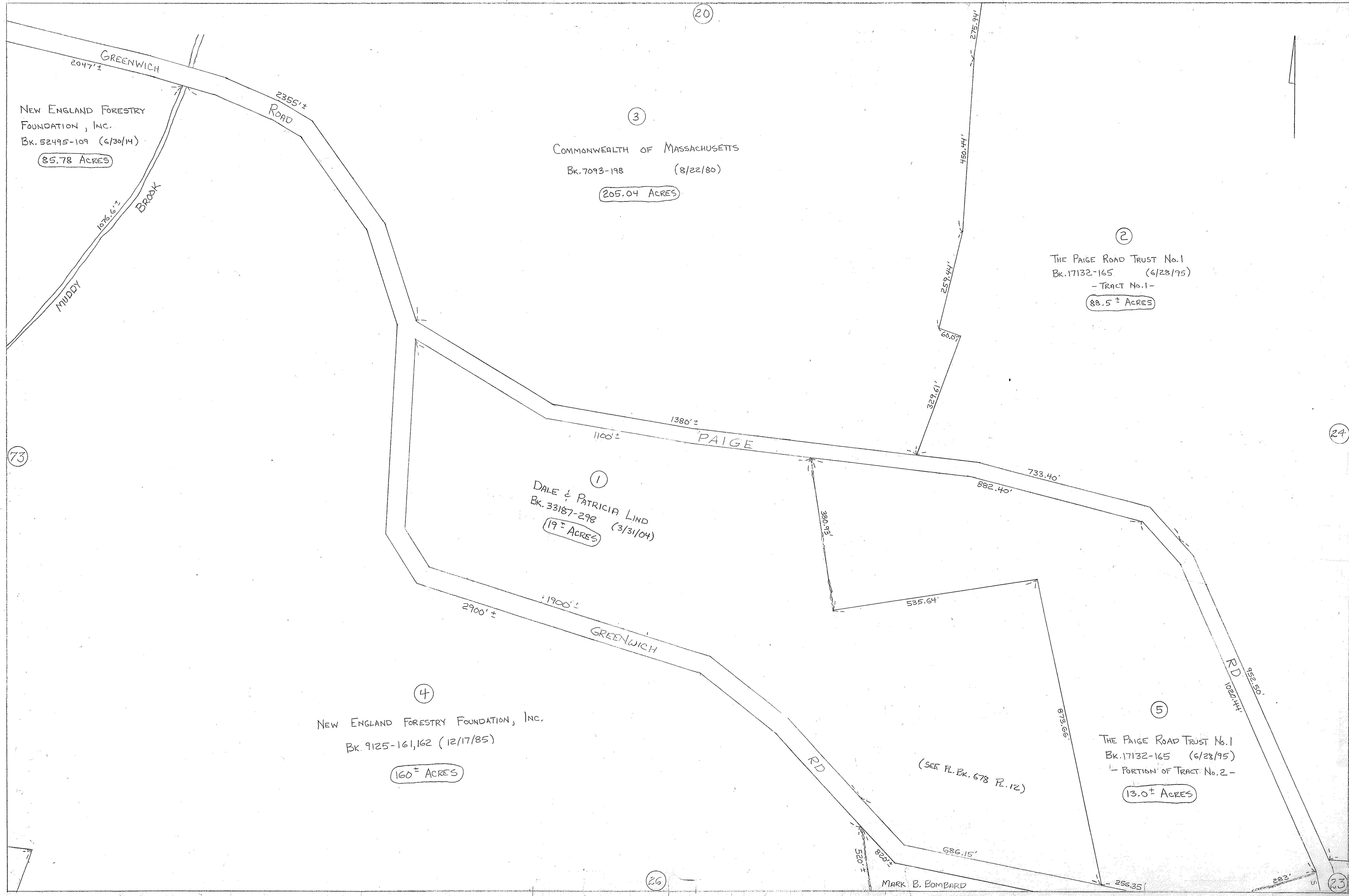
COMMONWEALTH OF MASSACHUSETTS
BK. 7093-198 (8/22/80)
205.04 ACRES

THE PAIGE ROAD TRUST No.1
BK. 17132-165 (6/28/95)
- TRACT No. 1 -
88.5 ± ACRES

DALE & PATRICIA LIND
BK. 33187-298 (3/31/04)
19 ± ACRES

NEW ENGLAND FORESTRY FOUNDATION, INC.
BK. 9125-161,162 (12/17/85)
160 ± ACRES

THE PAIGE ROAD TRUST No.1
BK. 17132-165 (6/28/95)
- PORTION OF TRACT No. 2 -
13.0 ± ACRES



73

20

3

2

1

4

5

26

24

23

MARK B. BOMBARD

(SEE PL. BK. 678 PL. 12)