

EAGLE HILL FOUNDATION OF MASSACHUSETTS, INC.
Bk. 42203-388 (12/18/67)
345.01'

EAGLE HILL FOUNDATION OF MASSACHUSETTS, INC.
Bk. 7530-393 (6/67/82)
Bk. 48351-178 (12/30/11)

51.3 ± ACRES

24

EAGLE HILL FOUNDATION OF MASSACHUSETTS, INC.
Bk. 7530-393 (6/7/82)
Bk. 48351-178 (12/30/11)

51.3 ± ACRES

CHARLES E. & ALINE A. LEMAITRE
Bk. 4702-519 (9/16/66)
- TRACT 1 -

29 ± ACRES

CHARLES E. & ALINE A. LEMAITRE
Bk. 10794-32 (9/04/87)
(PORTION OF TRACT 1)

62 ± ACRES

[SEE Bk. 2160-201 TRACT #2]

CHARLES E. & ALINE A. LEMAITRE
Bk. 10794-32 (9/04/87)
(TRACT 3)

6.69 ACRES

(PART OF 62 ± ACRES)

RAYMOND G., JR. & PAMELA B. ROBINSON
Bk. 60840-35 (8/7/19)

139.715 ACRES

22

(Bk. 12591-375)
(Bk. 33705-152)
"THE CONKEY FARM"

RAYMOND G., JR. & PAMELA B. ROBINSON
Bk. 33705-152 (5/26/04)
Bk. 12591-375 (1/25/90)

47.21 ACRES

2

RAYMOND G., JR. & PAMELA B. ROBINSON
Bk. 33705-152 (5/26/04)

33.05 ACRES

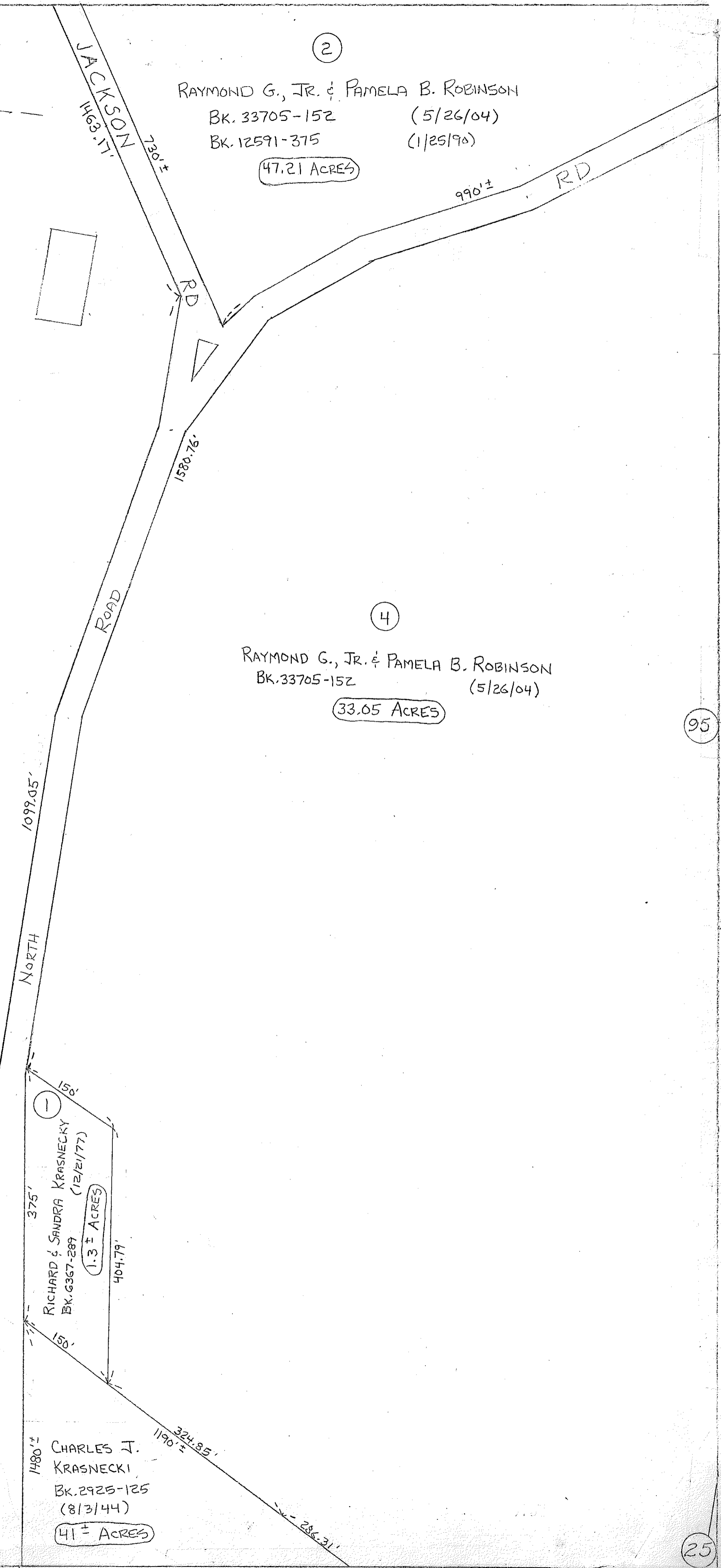
4

JOHN R. KRASNECKY
Bk. 11730-91 (11/2/88)
7.98 ACRES
(SEE PL. Bk. 609-78)

3

CHARLES J. KRASNECKY
Bk. 2925-125 (8/3/44)
15.5 ± ACRES

28



25

25

Scale 1" = 100'