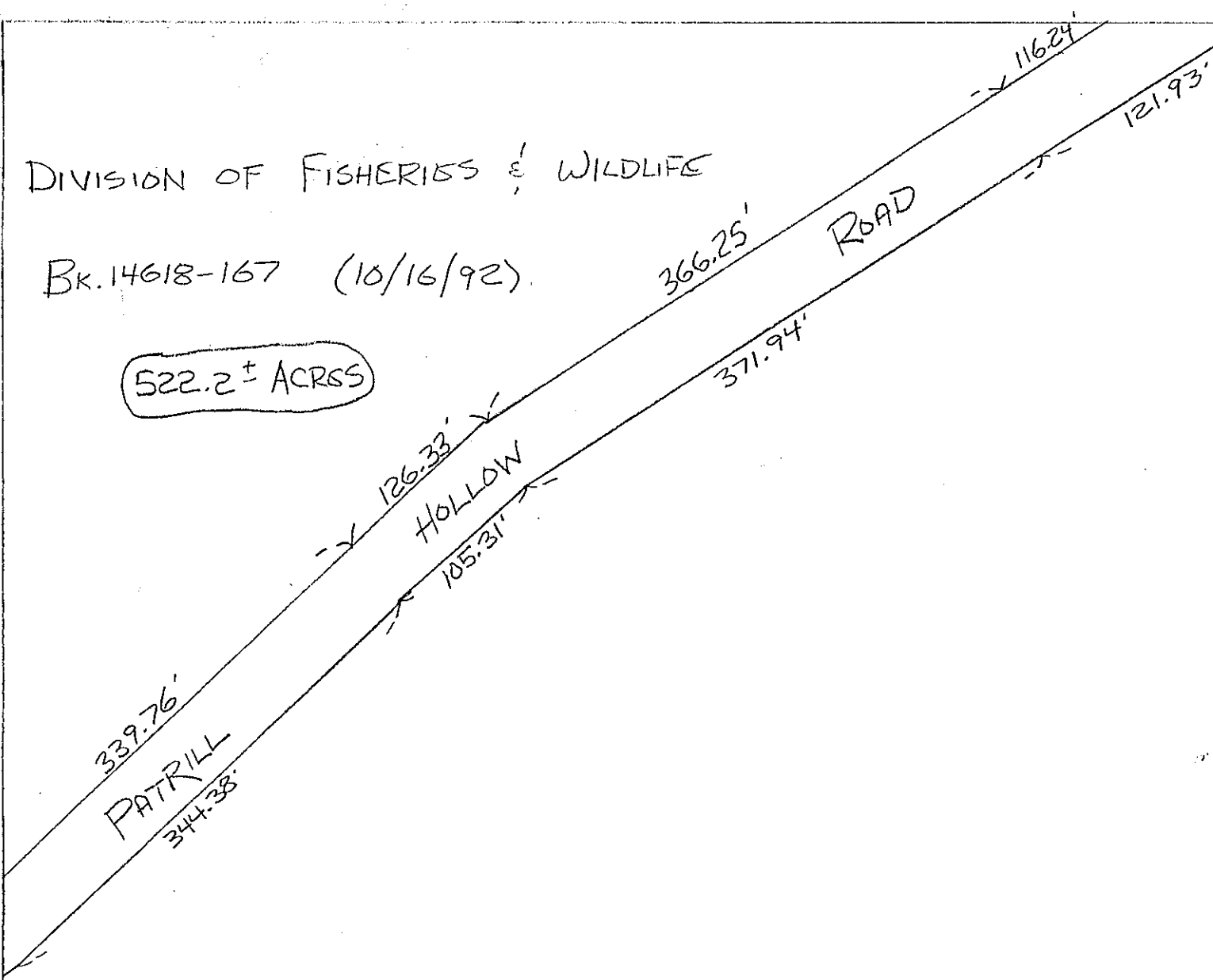


DIVISION OF FISHERIES & WILDLIFE

Bk. 14618-167 (10/16/92)

522.2 ± ACRES



DIVISION OF FISHERIES & WILDLIFE

Bk. 14618-167 (10/16/92)

125.4 ± ACRES

81

KENNETH J. & JILL STOLGITIS  
Bk. 21561-21 (6/29/99)

5.414 ACRES

515.95'

615.00'

34

3

KENNETH J. & JILL STOLGITIS  
Bk. 18271-272 (9/25/96)

72.361 ACRES

1951.15'

337.85'

944.91'

KENNETH J. & JILL STOLGITIS  
Bk. 18271-272 (9/25/96)

72.361 ACRES

40

STOLGITIS  
Bk. 23278-145  
(30.05 ACRES)

AURELIO MARCO & WENDY BARTON  
BOLOGNESI

Bk. 14337-160 (6/29/92)

23.5 ACRES

484.90'

747.62'

518.72'

394.44'

CHRISTOPHER R. & MEGEN S.  
TALBOT  
Bk. 40970-89

5.148 ACRES (4/11/07)

705.82'

518.73'

4.29'

35.77'

13.94'

5

544.38'

175.80'

175.80'

449.65'

38

KENNETH J. & JILL STOLGITIS  
Bk. 18271-272 (9/25/96)

2.471 ACRES

672.34'

200.00'

406.46'

4

468.75'

875.21'

146.81'

ROAD

200.00'

361.64'

STANLEY D.T. & ABBIE M.C. WHITE  
Bk. 63396-134 (10/01/20)

44.453 ACRES

MICHAEL G. MOTIAN &  
SANDRA J. MELKONIAN  
Bk. 52007-185 (2/3/14)

2.007 ACRES

345.60'

200.00'

387.17'

1

STANLEY D.T. & ABBIE M.C. WHITE  
Bk. 63396-134 (10/01/20)

45.828 ACRES

2186.63'

200.00'

200.00'

1250.36'

CZEKY

200.00'

1719.02'

2160.93'

37