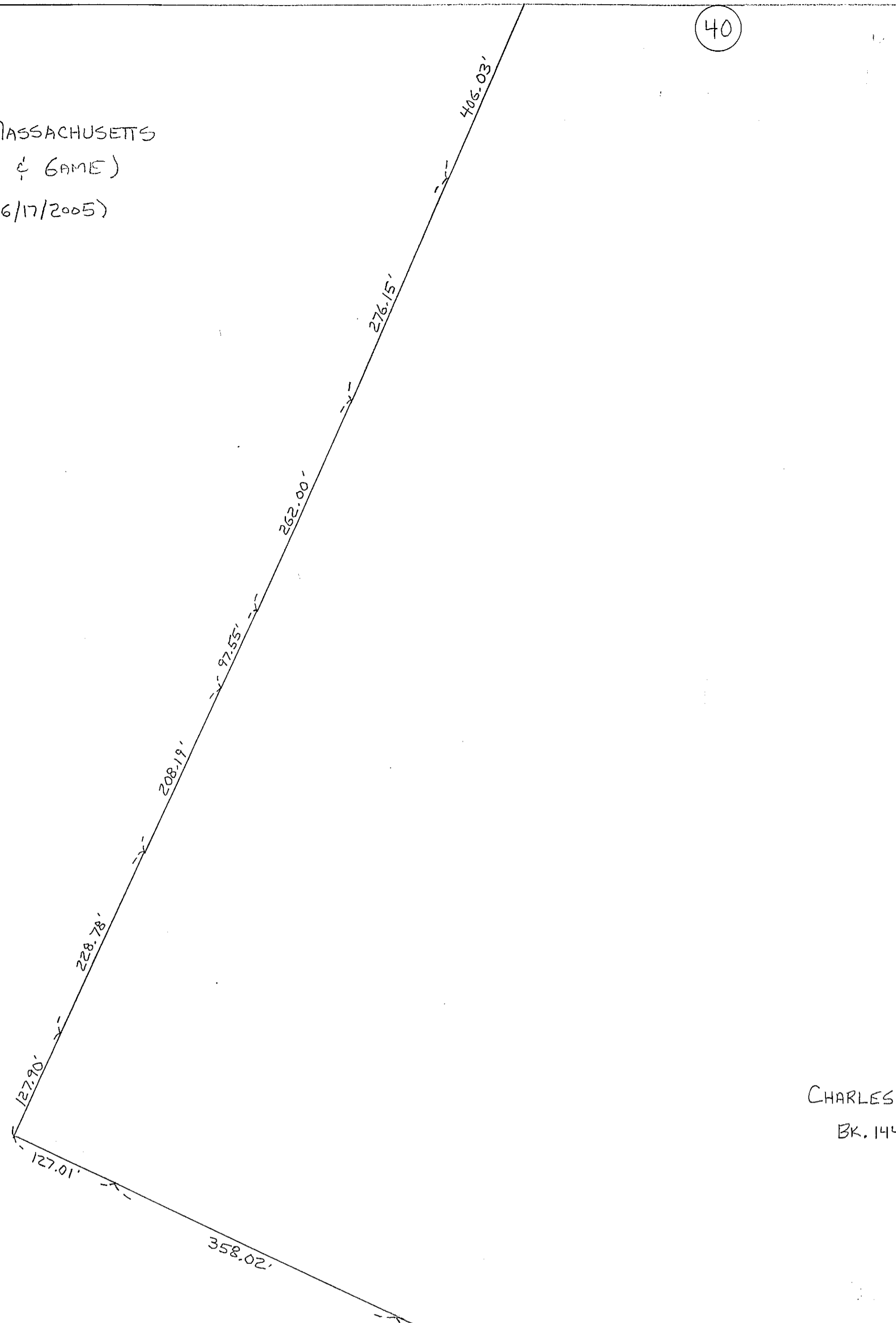


COMMONWEALTH OF MASSACHUSETTS
(DEPARTMENT OF FISH & GAME)

BK. 36585-358 (6/17/2005)

172.165 ACRES



STANLEY D.T. & ABBIE M.C. WHITE
BK. 38656-250 (3/30/06)

43.5 ACRES

CLYDE A. & MARILYN
R. BROWN
BK. 26472-247 (4/21/2002)

3.50 ACRES

(SEE R. BK. 777 P. 125)

ERIK S. SHAFFER
BK. 45674-387 (4/14/10)

3.832 ACRES

GREGORY B. & PAMELA T. BROWN
BK. 49874-344 (10/31/12)

4.25 ACRES

(SEE PL. BK. 767 PL. 43)

CHARLES S. & JEAN T. LUBELCZYK
BK. 14498-123 (9/3/92)

55.95 ACRES

RICHARD N. SULLIVAN
BK. 40391-99 (12/12/2006)

1.75 ACRES

(SEE PL. BK. 892 PL. 99)

PAUL R. MAILHOT, JR. & CRYSTAL D.
LUBELCZYK

BK. 18117-206 (7/26/96)

29.639 ACRES

CHARLES S. &
JEAN T. LUBELCZYK
BK. 14498-123
(9/3/92)

3.234 ACRES

KENDALL S. HOLMES & ELIZABETH A.
LANG-HOLMES
BK. 57915-12 (10/20/17)

7.97 ACRES

JOSEPH & ELIZABETH
BERGIN
BK. 37562-89 (10/6/05)

6.944 ACRES

COMMONWEALTH OF
MASSACHUSETTS
BK. 55036-158
(3/9/16)

5.52 ACRES

CHESTNUT FARMS NOMINEE TRUST
BK. 41448-355 (7/6/07)

78 ACRES

(TRACT I - PARCEL C)

DO DECA
NOMINEE TRUST
BK. 51389-349
(8/22/2013)

5.72 ACRES

DO DECA NOMINEE TRUST
BK. 51389-349 (8/22/2013)

15.64 ACRES

(SEE PLAN BK. 662 PLAN 82)

85

40

44

43

46