

CHESTNUT FARMS NOMINEE TRUST
Bk. 41448-355 (7/6/07)

40 ± ACRES

(SEE Bk. 368-126)

MARCEL R. & SUZANNE
T. BLAIS
Bk. 5413-74 (12/19/73)

38.2 ± ACRES

BERNARD C. PODBELSKI
Bk. 44010-181 (3/26/2009)
- PARCEL Z -

(NOT DEFINITE)

GENEVIEVE M. GERMAIN
Bk. 26051-278 (2/27/02)

135 ± ACRES

BERNARD JEFFREY CLARK PODBELSKI III
Bk. 55252-56 (4/22/16)

140 ± ACRES

NEIL J. HALIN & LISA JANICE COHEN
Bk. 56640-77 (1/20/17)

40.047 ACRES

BARBARA A. NEWTON
Bk. 41552-291 (7/27/07)

24.69 ACRES

NEIL J. HALIN & LISA JANICE
COHEN
Bk. 56640-77 (1/20/17)

12.802 ACRES

THOMAS M. MARTIN
Bk. 22599-245 (5/18/00)

53.82 ACRES

TODD M. BROWN
Bk. 57885-41 (10/16/17)

2.41 ACRES

ANTOINETTE LAROCK
Bk. 42439-107 (10/24/08)

2.40 ACRES

PATRICIA C. KORZEC
Bk. 39016-21 (5/23/06)

3.32 ACRES

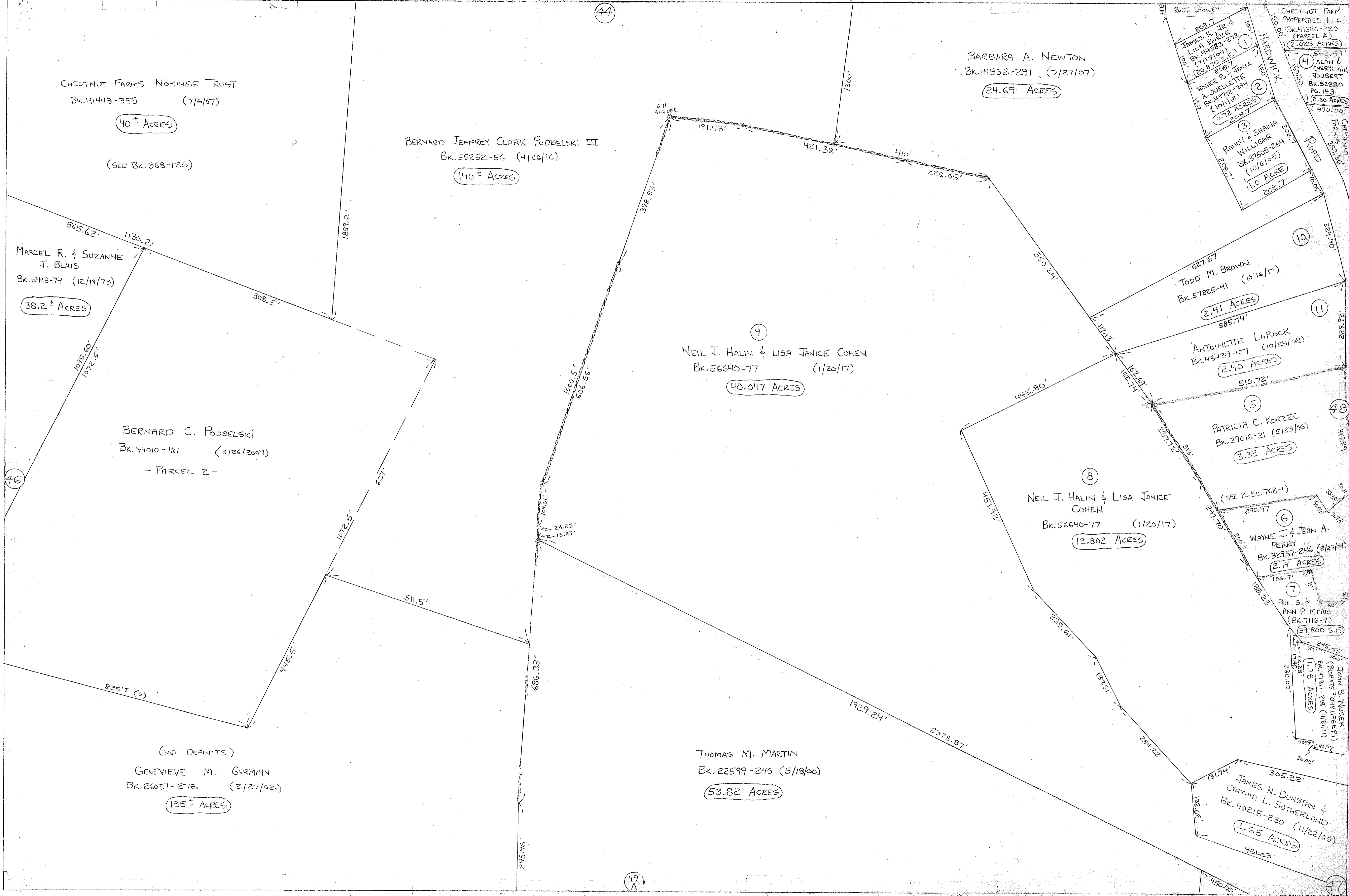
WAYNE J. & JEAN A.
PERRY
Bk. 32937-246 (2/27/04)

2.14 ACRES

ANN P. MITUS
(BK. 7116-7)
39,800 S.F.

JAMES N. DUNSTAN &
CYNTHIA L. SUTHERLAND
Bk. 40215-230 (11/22/06)

2.65 ACRES



44

46

49
A

47

11

10

5

6

7

17

16

15

4

3

2

1

8

48

3

2

1

1

1

1