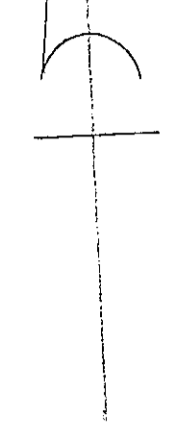


Met. Dist. Comm.
Bk. 2771 Pg 104 1940
102.6 Acres (Hardwick)

2

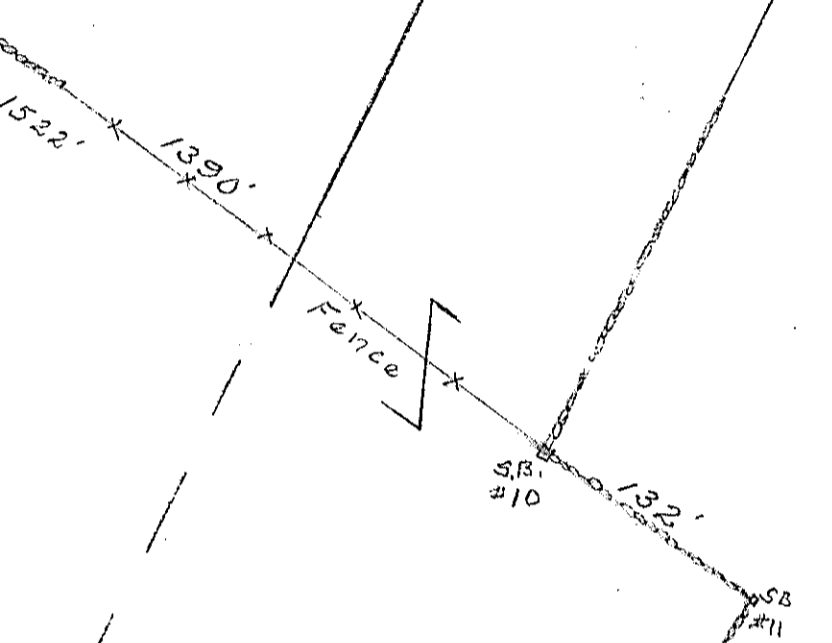


Met. Dist. Comm.
11/21/1938

PETERSHAM
(DANA)
HARDWICK

1/24 28 54 1/2

Met. Dist. Comm.
2920'
1885'



6

STEPHEN C.
BROWN
Bk. 10709-258
(8/13/87)

STEPHEN C.
BROWN
Bk. 10709-258
(8/13/87)

1

Hardwick Rod & Gun Club
8454 P199
1965
50 Acres

MELLON
2070'

Met. Dist. Comm.

8

5

Scale 1"=100'