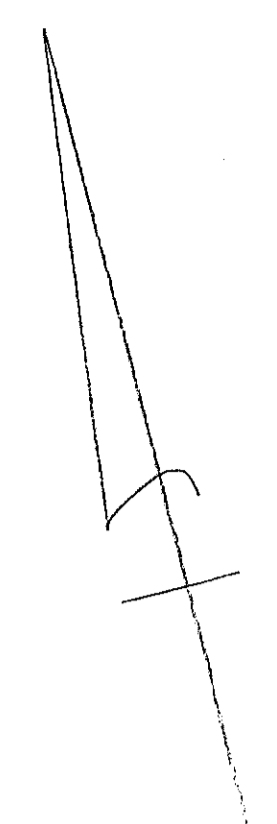


Met. Dist. Comm.

70



5175.5611

COMMONWEALTH OF MASSACHUSETTS  
BK. 7093-198 (8/22/80)

46.50 ACRES

(SEE P. BK. 456 P. 67)

Met. Dist Comm.

71A

480  
Gate  
#13

GREENWICH

2880.7

NEW ENGLAND FORESTRY FOUNDATION, INC.  
BK. 52495-109 (6/30/14)

85.78 ACRES

58  
#33

624.62'

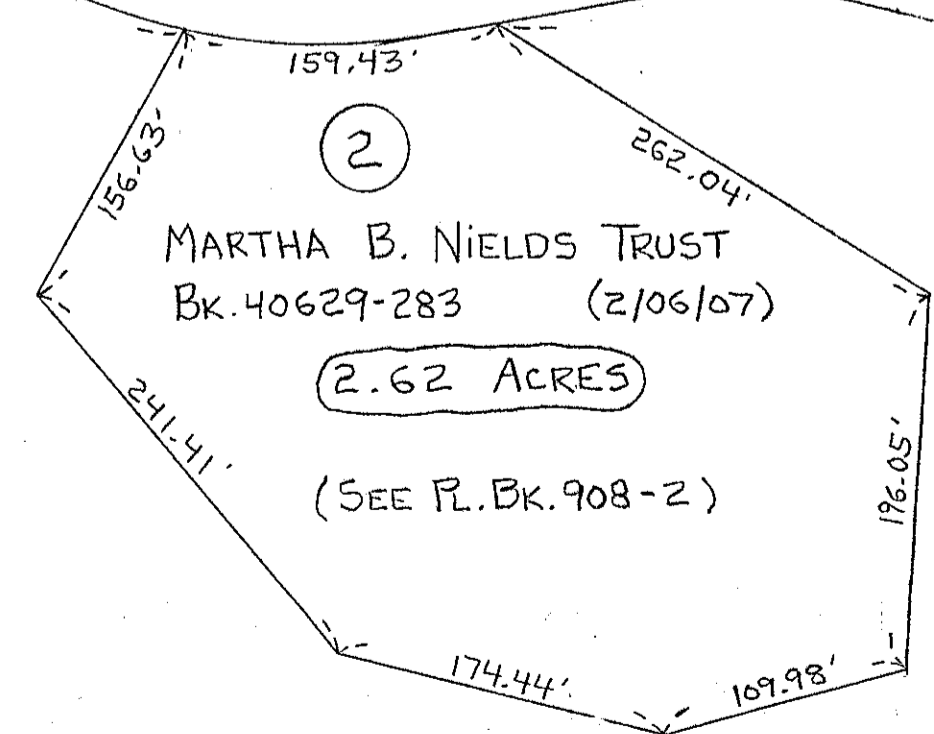
1001.91'

COMMONWEALTH OF MASSACHUSETTS  
BK. 7093-198 (8/22/80)

205.04 ACRES

20

1



MARTHA B. NIELDS TRUST  
BK. 40629-283 (2/06/07)  
2.62 ACRES  
(SEE P. BK. 908-2)

NEW ENGLAND FORESTRY FOUNDATION, INC.  
BK. 52495-109 (6/30/14)

85.78 ACRES

MELLON ROAD

MELLON

RD

73

71