

Met. Dist. Comm.

NEW ENGLAND FORESTRY FOUNDATION, INC.

3661.66'

7

NEW ENGLAND FORESTRY FOUNDATION, INC.
BK. 41464-248 (7/10/07)

106 ± ACRES

Met. Dist. Comm.

72A

996.00'

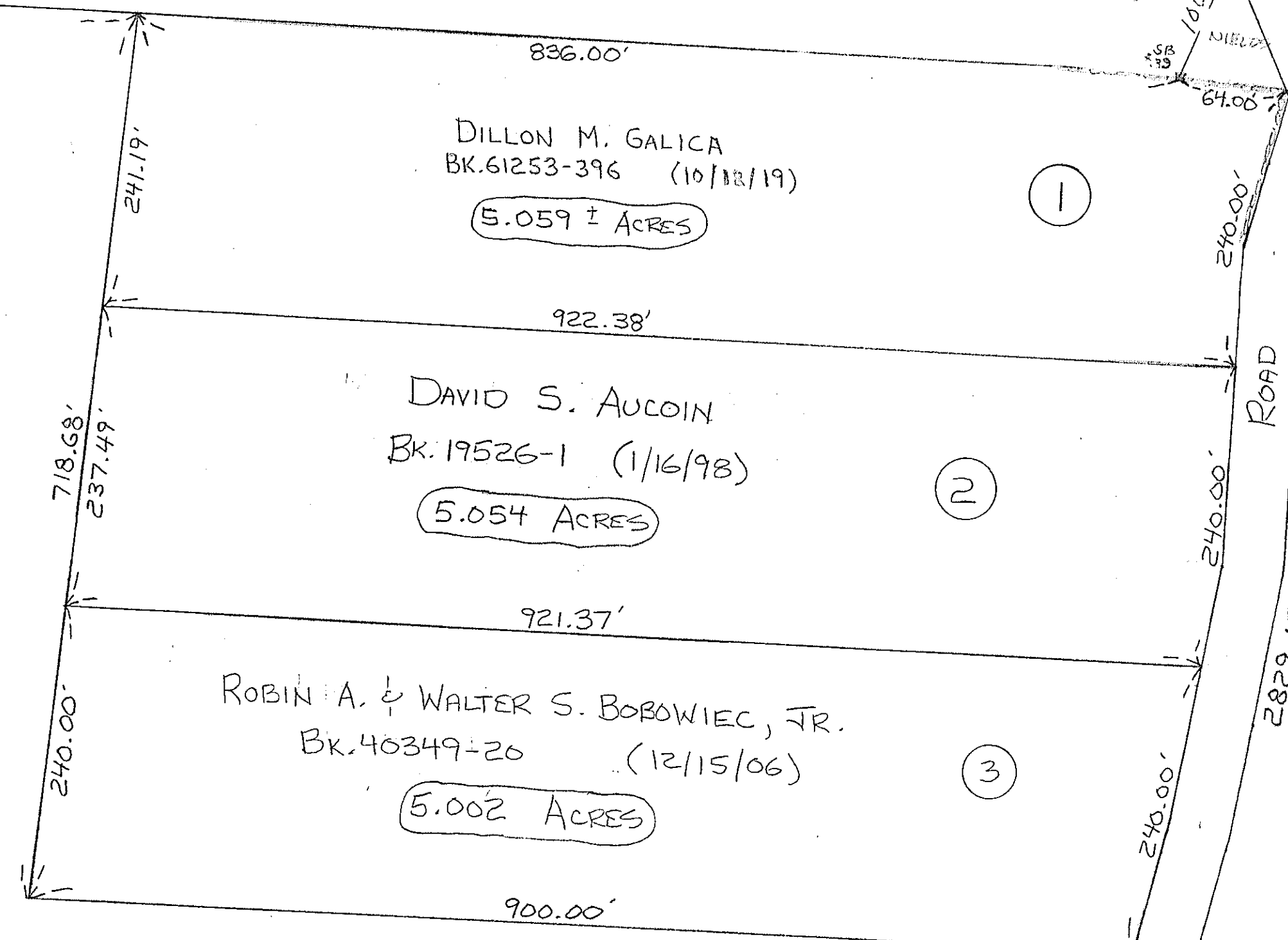
Met. Dist. Comm.

Met. Dist. Comm.

Road To Gate #44

Met. Dist. Comm.
ROAD

GREENWICH



ROAD

FREDERICK H. BROWN
BK. 20676-374 (11/18/98)

72.74 ACRES

6
NEW ENGLAND FORESTRY FOUNDATION, INC.
BK. 59878-235 (12/28/18)

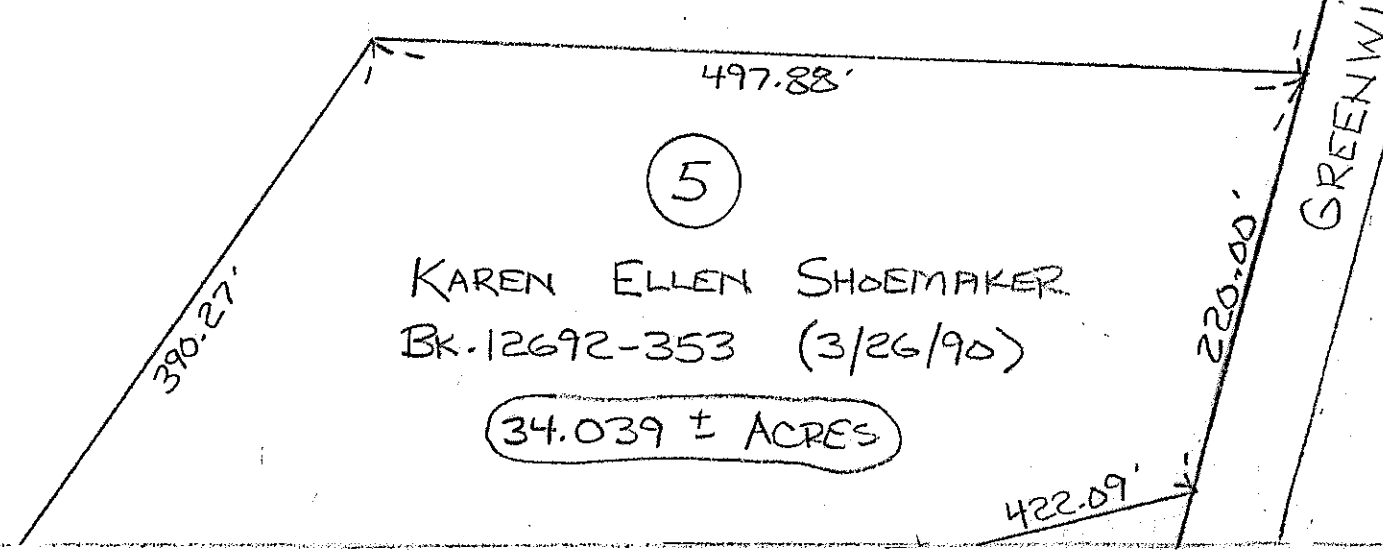
24 ± ACRES

4

JOHN T. O'BRIEN, JR.
BK. 43280-192 (9/05/08)

38.245 ACRES

(SEE P.L. BK. 475 P. 74)



GREENWICH

1432.15'

3300'

NEW ENGLAND FORESTRY FOUNDATION, INC.
BK. 9128-279 ()

180 ± ACRES

74

73

1335.32'
7972'