

1A) BERNARD & CYNTHIA A. DUNAS  
Bk. 34635-302 (9/27/2004)  
2.012 ACRES

2) RONALD A. & MONICA E. LARSON  
Bk. 18414-32 (11/20/96)  
3.26 ACRES

3) KEVIN M. & TRACIE K. SHEA  
Bk. 27739-184 (10/7/02)  
3.00 ACRES

3B) NICKSON - BLAKE  
Bk. 10845-098  
1.074 - 3 AC

5) SHELDON A. & SARAH A. HARDING  
Bk. 16654-116 (10/21/94)  
3.00 ACRES

92) THOMAS M. & KRISTINE E. DOUGAN  
Bk. 17365-344 (10/3/95)  
3.058 ACRES

7) THOMAS M. & KRISTINE M. DOUGAN  
Bk. 43546-359 (11/26/08)  
Bk. 23887-388 (4/24/01)  
4.368 ACRES

8) TOD J. & CRISTY L. BERTINI  
Bk. 35840-54 (3/7/2005)  
3.155 ACRES

GREAT LAKES CAMP, INC.  
Bk. 22431-98 (3/27/00)  
51.222 ACRES

1) GREAT LAKES CAMP, INC.  
Bk. 22431-98 (3/27/00)  
3.143 ACRES

2) GREAT LAKES CAMP, INC.  
Bk. 35840-52 (3/7/2005)  
2.968 ACRES

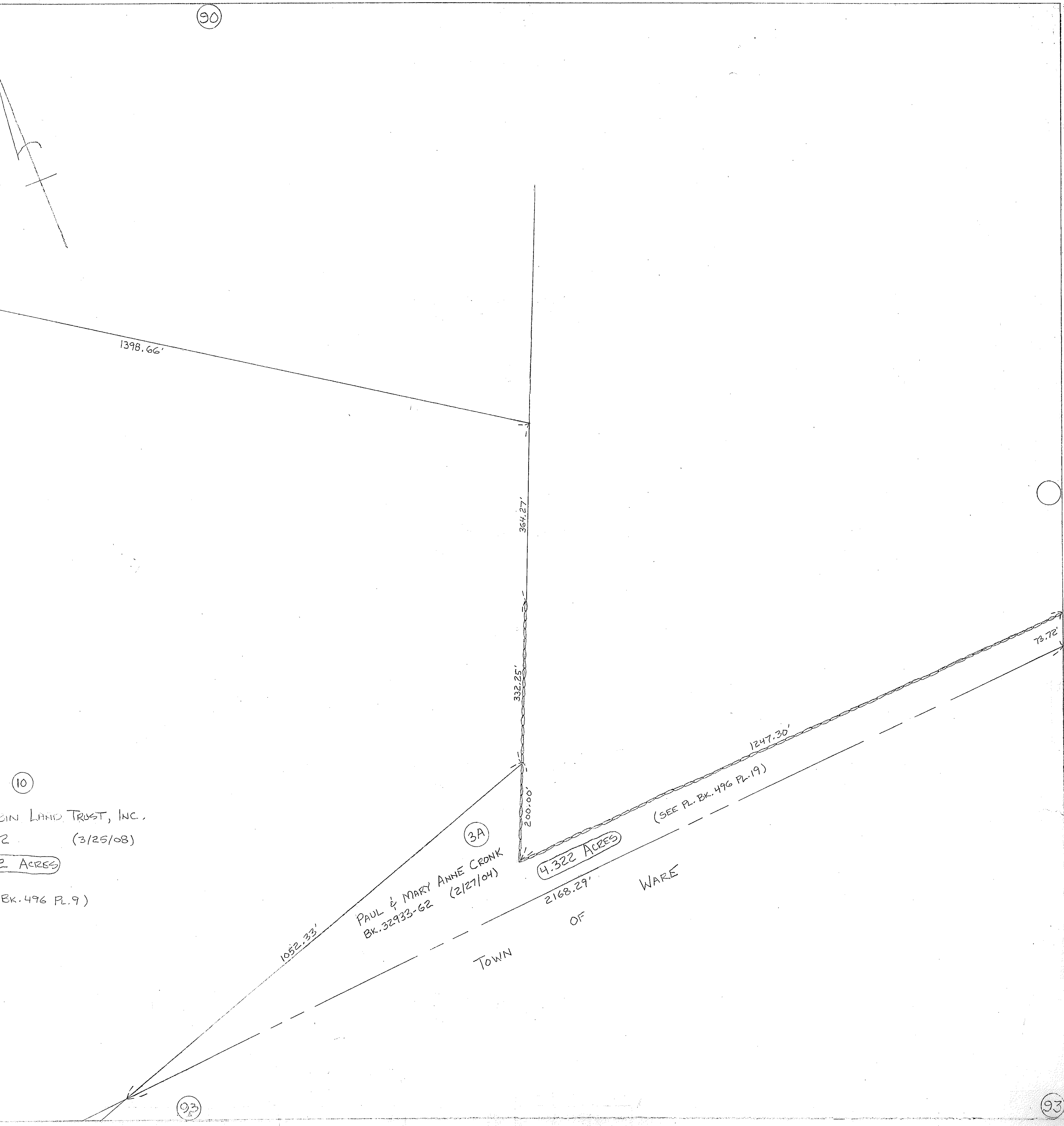
ARTHUR FROST

10) EAST QUEBEC LAND TRUST, INC.  
Bk. 42597-292 (3/25/08)  
45.42 ACRES  
(SEE PL. BK. 496 PL. 9)

4) JOHN W. CLARK & CASSANDRA M. SHEA DECLARATION OF TRUST  
Bk. 56302-218 (11/15/16)  
8.467 ACRES  
(SEE PL. BK. 865 PL. 81)

3A) PAUL & MARY ANNE CRONK  
Bk. 32933-62 (2/27/04)  
4.322 ACRES  
(SEE PL. BK. 496 PL. 19)

TOWN OF WARE



90

93

93